

2026 Catalog

# Research Models and Services





# Raising the Standard of Research Success Together

## A partnership that advances science efficiently, ethically, and with purpose

Every study begins with a challenge. How to do more with less. Less time, fewer resources, tighter budgets – yet more expectations.

At Charles River, our role is to stand beside you and provide the services, expertise, and support that help you focus on what matters most: achieving meaningful outcomes that improve lives.

While our mission is driven by the 3Rs — **Replacement, Reduction, and Refinement** — to facilitate research that is more responsible, sustainable, and impactful, our goal is to deliver solutions that simplify planning and maximize budgets, without sacrificing quality.

As you explore the 2026 Research Models and Services Catalog, consider these solutions designed to elevate efficiency, predictability, and scientific success.

- **Comprehensive Model Portfolio:** Study-ready and humanized models for general-purpose and translational research, with custom model creation available for added specificity.
- **Strategic Breeding:** Colony management services improve supply predictability, reduce variability, and streamline operational costs.
- **Sentinel-Free Monitoring:** PathogenBinder®\* enables efficient health monitoring without sentinels.

From our low-stress handling program to our online ordering system, every offering is designed to ease operational challenges, safeguard colonies, and raise the standard



of research success. Together, we're not just advancing science—we're shaping a future where research is smarter, more compassionate, and more effective.

*\*Patent pending.*

Our Comprehensive Portfolio is a Click Away →



# Contents

---

## Overview

- Contact Us
- Online Ordering Platform
- Ordering Information
- Animal Model Evaluation Program
- Cancellation Policies
- Shipping and Transportation Policies for Animal Orders
- VAF Health Profiles
- International Genetic Standardization (IGS) Program

## Rat Models

- Comparison of Models
- Brown Norway
- CD® IGS
- CDF™ (Fischer)
- Dahl/Salt Sensitive
- Lewis
- Long-Evans

- SHR
- Wistar IGS
- Wistar Han IGS
- ZDF
- ZSF1
- Zucker

## Mouse Models

- Cryopreserved Mouse Models
- 129-Elite
- Athymic HE
- B6 Albino
- B6C3F1
- B6D2F1 (BDF1)
- BALB/c
- BALB/c-Elite
- C3H
- C57BL/6
- C57BL/6-Elite
- C57BL/6 Aged
- CB6F1

- CD-1® IGS
- CD1-Elite
- CD2F1 (CDF1)
- CF-1™
- CFW® (Swiss Webster)
- DBA/2
- FVB
- NCI B6-Ly5.1/Cr
- NU HE
- SJL-Elite
- SKH1-Elite

## Immunodeficient Models

- Cryopreserved Immunodeficient Models
- Comparison of Models
- Athymic Nude Mice
- BALB/c Nude Mice
- CD-1® Nude Mice
- Fox Chase CB17 SCID® Mice
- Fox Chase SCID® Beige Mice
- HuCD34-NCG Mice

- HuPBMC-NCG Mice
- HuPBMC-NCG-B2m-KO Mice
- HuPBMC-NCG-MHC-dKO Mice
- NCI SCID/NCr Mice
- NCG Mice
- NCG-B2m-KO Mice
- NCG-hIL2 Mice
- NCG-hIL15 Mice
- NCG-HLA-A2.1 Mice
- NCG-M Mice
- NCG-MHC-dKO Mice
- NCG-X Mice
- NCG/PBMC Select Humanization Kit
- NCG-B2m-KO/PBMC Select Humanization Kit
- NCG-MHC-dKO/PBMC Select Humanization Kit
- NIH-III Nude Mice
- NOD SCID Mice
- NU/NU Nude Mice
- Nude Rats (RNU)
- SCID Hairless Outbred (SHO®) Mice
- SRG Rats



# Contents

---

## Rabbit/Guinea Pig/Gerbil/ Hamster Models

Hartley Guinea Pigs  
LVG Golden Syrian Hamsters  
Mongolian Gerbils  
New Zealand White Rabbits

## NCI Grantee Models

NCI Athymic NCr-nu/+ Mice  
NCI Athymic NCr-nu/nu Mice  
NCI B6-Ly5.1/Cr  
NCI BALB/cAnNCr  
NCI C57BL/6NCr  
NCI Cr:SW (Swiss Webster)  
NCI SCID/NCr Mice

## Rodent Surgery, Biospecimen, Other Services

Pre-ID™ Species and Services  
Pre-Dosing/Pre-Injection Services  
Custom Diets  
Aging Services  
Rodent Surgery  
Vascular Catheterizations  
Non-Vascular Catheterizations  
Soft Tissue Procedures  
Neurological Procedures  
Device implants  
Accessories for Catheterized Rodents  
Rodent Biospecimens

## Research Animal Diagnostic Services

Alternative (Sentinel-Free) Programs  
PathogenBinder® Kit  
PRIA® (PCR Rodent Infectious Agents) Panels

Cell Line & Research Biologics Sample  
Collection Kit  
Traditional Whole-Animal Sentinel Program  
Hybrid Programs  
Microbiology Culture  
Germ-Free Colony Health Screening  
Serology Profiles  
Serology Reagents  
Nonhuman Primate (NHP)  
Health Surveillance for Additional Species

## Genetically Engineered Models and Services

Breeding Services  
Quarantine Services  
Rederivation Services  
Cryopreservation Services  
Cryorecovery Services  
Microinjection Services  
Specialized Embryology Services  
Transgenic Model Creation

## Genetic Monitoring Services

Background Strain Characterization

## Immune Cells and Stem Cells

Human PBMCs and CD34+ Stem Cells

## The Charles River Accelerator and Development Lab (CRADL®)

CRADL®  
Research-Ready  
Flexible  
Comprehensive

## Glossary of Terms



## Contact Us

Our customer service representatives strive to make the research model order and shipment process as easy as possible for you. We offer three ways for you to order research models:

Phone: 1.800.522.7287  
Email: [researchmodels@crl.com](mailto:researchmodels@crl.com)  
Online ordering: [Animal Model Ordering](#)

## Online Ordering Platform

Our online ordering platform provides a streamlined solution for placing and managing orders. The platform enables users to:

- View real-time inventory based on selected order specifications and account-specific pricing
- Create and share quotes with collaborators or procurement teams
- Receive immediate order confirmations

The system is designed to facilitate fast and accurate decision-making, reduce administrative overhead, and improve coordination among research and procurement teams.

Orders can be placed and managed at your convenience, with access to current availability and pricing in real time.

[Request Your Access](#) →

## Ordering Information

Sales are made based on telephone orders without written documentation. Email confirmation of orders are available upon request. Our acceptance of your order is expressly made conditional on your consent to our [General Terms and Conditions of Sale](#), and our prices have been set accordingly.

Any provision of a purchase order or confirmation that is additional to, or conflicts with, our General Terms and Conditions of Sale is expressly rejected and shall not be binding on us. Please consider this before placing your order.

Some animal models are produced only in small quantities. Upon your request, we will work to scale up our colony production to meet your needs.

The prices in this catalog are for customers located in the United States who are purchasing research models and services sourced from

the United States. All other customers should contact Customer Service for pricing in your region.

**Birth Dates** - Age of animals are furnished on shipping documents for orders placed by age and are based on cohort of specified animals that all share the same week of birth encompassing a defined seven-day period. Once per week the entire cohort ages to the next age bracket. Exact age placed orders will have confirmed birth dates of the specified animals.

**Age/Weight Correlation** - Our research models are sold within specific weight ranges or at a certain age as given in the catalog. For specific orders outside the standard weight range or age, additional charges may apply.

1-gram weight range for inbred mice	Add 5%
5-gram weight range for non-obese rats and hamsters	Add 25%
10-gram weight range for non-obese rats	Add 15%
Retired breeders with specified weight or approximate age	Add 50%

**Pregnant Animal Guarantee Policy** - Charles River produces pregnant animals to your order specifications. Most barrier-reared rats and mice can be safely and accurately palpated for

pregnancy after 13 days of gestation. Prior to that, pregnancy is determined by observation of a vaginal plug. Following timed exposure to the male, the date the copulatory plug is found (plug date) is considered to be day one of gestation unless noted otherwise. Percent guaranteed pregnant is at time of shipment.

Percent Guaranteed Pregnant at Time of Shipment			
Stock or Strain	Timed Pregnant Up to 12 Days Gestation	Timed Pregnant 13 Days Gestation and Over	Untimed Pregnant 13-17 Days Gestation Only
Outbred Rats	Plug guarantee only	100%	95%
Outbred Mice	Plug guarantee only	100%	100%
Inbred Rats and Mice	Plug guarantee only	75%	75%
NZW Rabbits*	Plug guarantee only	100%	N/A

**Note:** We do not guarantee the number of offspring per litter. Due to natural variations in the length of gestation, the exact day of parturition is not guaranteed. To avoid charges, cancellations for pregnant animals must be received prior to the scheduled mating day.  
*\* For the NZW rabbit, the breed date is day 0 for all timed pregnant orders.*

[Learn More](#) →



## Animal Model Evaluation Program

### Which Animal Model is Right for Your Study?

Choosing the appropriate animal model for your studies is critical to the success of your research. The Charles River Animal Model Evaluation Program helps you evaluate the quality and suitability of our models before you decide. Whether you're starting a new research protocol, working on or refining a pilot study, or considering switching to a different animal model, this program supports you in making the best decision.

[Learn More →](#)

## Cancellation Policies

### Standard or Regular Animal Orders

Cancellations for standard animal orders must be received at least one business day before the scheduled shipment date to avoid charges.

### Humanized Mice Orders

To avoid charges, HuPBMc-NCG mouse orders must be canceled before the scheduled injection day. HuCD34-NCG mouse orders must be canceled at least 11 business days before the scheduled shipment. Large or multiple orders, over 45 animals, must be canceled at least 21 business days before the scheduled shipment. Otherwise, the order(s) will incur a cancellation fee of 50% of the total order value.

### C57BL/6 Aged Mice Orders

Cancellations of C57BL/6 aged mice will incur a restocking fee of 25% of the total order value.

### Rabbit Orders

Cancellation of rabbit orders weighing 3.0 kg or more will incur a fee of 50% of the animal's cost if not canceled at least five business days before the scheduled ship date. Orders for rabbits weighing 2.9 kg or less must be canceled at least one business day prior to the scheduled ship date.

### Timed Pregnant Animals

To avoid charges, cancellations for pregnant animals must be received prior to the scheduled mating day.

### Value-Added Services

To avoid charges, cancellations for value-added services, including, but not limited to, tattooing and ear tagging, must be received at least five business days before the scheduled ship date. Cancellations for orders with Somark Labstamp® identification numbers must be received at least ten business days before the scheduled ship date.

### Surgical and Biospecimen Services

Cancellations must be received at least six business days (eleven business days for guinea pigs and other intercompany animal transfers) before the scheduled ship date for most orders. Notice of cancellation is extended prior to the scheduled ship date for procedures with prolonged holding times, including, but not limited to, 5/6 nephrectomy, Parkinson's, and telemetry procedures. Order cancellations requested outside of our policy will incur fees for animals and a cancellation fee for the surgery procedure(s).

### Shipments Outside North America

To avoid charges, standard animal orders must be canceled at least one business day before the scheduled shipment date. Documentation fees may still apply. If the cancellation notice is received after the animals are packed and/or sent to the airport, the customer is responsible for animal and freight charges for transportation to/from the airport.

[Learn More →](#)



# Shipping and Transportation Policies for Animal Orders

## Filtered (Sew Easy™ and Tear Easy™) Shipping Container Densities

It is our responsibility to maintain the strictest health and welfare standards when shipping our animals, not only because it's the right thing to do, but because our animals are vital to your research. To help make the comfort and care of our animals a priority, we provide several crates that are tailored to established shipping density guidelines for a variety of species. Our shipping crates have viewing windows that allow you to inspect the animals and assess their interior conditions during and after shipping. The interior of our filtered crates is UV-light irradiated prior to packing animals, and our individual Gnoto-safe® plastic containers are disinfected with a cold sterilant prior to packing the animals.

In our standard Mouse and Rat VAF and GSS crate shipments, we are now providing "enrichment tunnels". The cardboard tunnels

will offer structural enrichment for your animals while in transit and the tunnels can be utilized by your teams for "stress-free handling".

For shipments outside North America, import/export preparation charges will apply.

[Learn More](#) →

### Mice

Gram Range Non-Obese	Days Range Non-Obese	Days Range Obese	Animals per Container*
Up to 35	Up to 56	Up to 56	33
51-75	57-plus	22-24	33
		71-plus	20

\* For aged and retired breeder mice, the number of animals per container may vary due to the animals' age or condition.

### Guinea Pigs

Gram Range	Days Range	Animals per Container*
Up to 350	Up to 33	10
351-600	34-65	6
601-800	66-81	5
801-plus	82-plus	4

\* For retired breeder guinea pigs, the number of animals per container may vary due to the animals' age or condition.

### Gerbils

Gram Range	Days Range	Animals per Container
Up to 35	Up to 35	35
36-50	36-56	25
51-70	57-84	20
71-plus	85-plus	15

### Hamsters

Gram Range	Days Range	Animals per Container
Up to 50	Up to 21	25
51-70	22-42	20
71-plus	43-plus	15*

\* Females weighing 90 grams or over or more than 43 days old are packed three per crate.

### Rabbits

Kilogram Range	Animals per Container
Up to 2.5	2
2.6-plus	1

### Special Services

	Rats per Container	Mice per Container	Guinea Pigs per Container	Hamsters per Container
Retired breeders	2	33*	2	3
Proven breeders	2	33	2	3
Timed pregnants	5	17	3	3
Untimed pregnants	5	17	3	3
Mothers with pups	2	3	2	2
Lactating females	5	33	3	15

\* For retired breeder mice, the number of animals per container may vary due to the animals' age or condition.

### Rats

Gram Range Non-Obese	Days Range Non-Obese	Days Range Obese	Animals per Container*
Up to 75	Up to 26	Up to 24	17
76-100	27-30	25-26	13
101-125	31-35	27-28	10
126-150	36-42	29-36	9
151-200	43-50	37-42	8
201-250	51-60	43-48	6
251-300	61-70	49-56	5
301-400	71-94	57-63	4
401-450	95-plus	64-70	3
451-plus		71-plus	2

\* Number of animals per container may be reduced as needed based on model requirements.

### 100% Recyclable Gnoto-safe® Shipping Containers

	Mice	Rats
Animals per container*	20	2

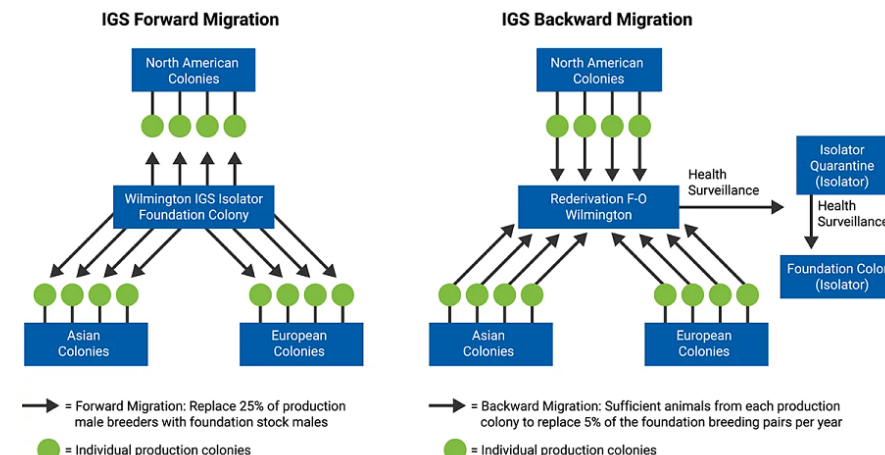
\* Two cages per container.

## VAF Health Profiles

Charles River is committed to providing you with high-quality genetically standardized models such as VAF/Plus® and VAF/Elite® animals, which are free of select infectious agents and parasites. We understand that selecting the appropriate animal model for your studies is critical to your research success.

For further information regarding viral profiles, microbiological flora, or the comprehensive list of agents included and excluded in the Charles River health surveillance program, visit the Health Reports section of our website.

[Learn More →](#)



## International Genetic Standardization (IGS) Program

Our unique International Genetic Standardization (IGS) program is designed to manage the health and genetics of your inbred/outbred mice and rat strains to ensure high quality and uniformity, regardless of where they are bred. The IGS management system is validated by genetic monitoring of animals from the central Foundation colonies and each global production barrier room.

Our genetic monitoring program utilizes single nucleotide polymorphism markers (SNPs) distributed across all chromosomes. Outbred models are assessed once annually to assess whether colonies maintain similar levels of genetic variability, thus indicating that the breeding and migration program is successful in minimizing genetic drift between colonies.

For inbred colonies, genetic monitoring is performed on animals from each barrier room production colony once quarterly utilizing a panel of SNP markers designed to distinguish all inbred strains bred at our facilities from one another to certify the genetic authenticity of each inbred strain.

[Learn More →](#)



# Rat Models

---

At Charles River, we are committed to ensuring the consistent availability of the highest quality research models worldwide. Our portfolio of outbred, inbred, and disease/translational rat models empowers you to choose the most suitable animal model for your research needs.





CD® IGS (Sprague Dawley) Rats

specify CD  
Strain Code: 001  
Nomenclature: Crl:CD(SD)

[Strain Page](#) 



Long-Evans Rats

Strain Code: 006  
Nomenclature Crl:LE

[Strain Page](#)



Wistar IGS Rats

Strain Code: 003  
Nomenclature Crl:WI

[Strain Page](#) 



Wistar Han IGS Rats

Strain Code: 273  
Nomenclature Crl:WI(Han)

[Strain Page](#) 

Weight in Grams	Male Price	Female Price	Male Price	Female Price	Male Price	Female Price	Male Price	Female Price
Up to 50	30.62	30.71	41.77	42.33	32.64	33.38	34.84	34.92
51-75	38.84	40.67	49.25	52.70	41.28	44.46	44.40	48.02
76-100	47.73	49.68	59.56	62.36	49.85	52.73	53.91	57.28
101-125	54.13	56.23	66.65	68.61	57.96	61.21	62.95	65.48
126-150	62.50	68.97	72.73	75.22	64.71	69.19	68.61	75.58
151-175	66.43	75.51	77.40	87.38	68.81	77.23	71.83	80.71
176-200	77.48	81.33	85.59	92.37	79.43	82.99	81.39	88.37
201-225	82.64	86.06	91.44	101.89	85.96	88.62	89.45	94.95
226-250	89.86	93.43	103.92	110.32	93.18	95.59	98.85	-
251-275	96.69	105.35	113.58	125.12	100.53	-	104.30	-
276-300	100.85	-	119.51	-	105.15	-	109.50	-
301-325	106.58	-	127.07	-	108.25	-	118.31	-
326-350	116.91	-	Upon Request	Upon Request	Upon Request	Upon Request	Upon Request	Upon Request
351-plus	Upon Request	Upon Request	-	-	-	-	-	-
Retired breeders	77.61	75.51	86.30	85.51	81.26	80.64	85.83	82.64
Lactating rat with litter	-	276.77	-	323.75	-	288.13	-	305.14
Timed pregnant*	-	272.42	-	300.52	-	268.78	-	297.59
Untimed pregnant*	-	228.36	-	246.27	-	224.87	-	249.17

\* For timed and untimed pregnant, please see our pregnant animal guarantee policy.



**Brown Norway Rats**  
specify BN  
Strain Code: 091  
Nomenclature: BN/CrI

Strain Page



**Fischer Rats**  
specify CDF™  
Strain Code: 002  
Nomenclature: F344/DuCrI

Strain Page



**Lewis Rats**  
Strain Code: 004  
Nomenclature: LEW/CrI

Strain Page








**SRG Rats®§~**  
Strain Code: 707  
Nomenclature: Sprague Dawley-Rag2<sup>em2hera</sup>//2rg<sup>em1thera</sup>/  
HblCrI

Strain Page

Age in Weeks*	Male Price	Female Price	Male Price	Female Price	Male Price	Female Price	Commercial Price	Academic Price
3 (21-27 days)	130.97	133.05	64.65	70.27	85.81	82.86	474.78	379.83
4 (28-34 days)	149.43	167.49	79.76	77.16	95.98	93.95	495.22	408.90
5 (35-41 days)	182.11	202.02	95.25	94.30	101.50	104.13	515.67	437.98
6 (42-48 days)	208.91	244.38	104.24	105.42	123.21	119.89	536.11	467.06
7 (49-55 days)	254.49	244.38	117.31	126.14	143.80	129.14	556.56	496.14
8 (56-62 days)	264.74	285.50	124.67	126.14	154.25	142.37	577.01	525.22
9 (63-69 days)	300.72	285.50	139.23	126.14	162.22	142.37	597.45	554.29
10 (70-76 days)	318.38	368.47	-	-	175.84	142.37	617.89	583.37
10-plus	-	-	Upon Request	Upon Request	-	-	-	-
11 (77-83 days)	318.38	368.47	-	-	-	-	638.34	612.45
11-plus	-	-	-	-	Upon Request	Upon Request	-	-
12 (84-90 days)	-	-	-	-	-	-	658.79	641.52
12-plus	Upon Request	Upon Request	-	-	-	-	-	-
13 (91-97 days)	-	-	-	-	-	-	679.21	670.60
14 (98-104 days)	-	-	-	-	-	-	699.67	699.67
Retired breeders	144.73	139.41	92.03	90.30	99.36	95.73	-	-
Lactating rat with litter	-	830.61	-	515.81	-	465.59	-	-
Timed pregnant**	-	692.26	-	419.23	-	400.64	-	-
Untimed pregnant**	-	635.27	-	377.36	-	312.13	-	-



	    				
Characteristic	Dahl/SS	SHR	ZDF	ZSF1	Zucker
Insulin resistance	+	+	+	+	+
Hyperinsulinemia	+	+	+	+	+
Type 2 diabetes	–	–	+	+	–
Fasting hyperglycemia	–	–	+	+	–
Hypertension	+	+	–	+	–
Obesity	–	–	+	+	+
Cardiovascular disease	–	–	–	–	–
Hypertriglyceridemia	+	+	+	+	+
Hypercholesterolemia	+	+	+	+	+
Nephropathy	+	–	+, 1	+, 2	+, 1
Leptin receptor defect	–	–	+	+	+
Special diet requirements	+	–	+	+	–
Genetics	I	I	I	H	O

Please contact Customer Service at 1.800.522.7287 for information on preconditioning of animal models from Charles River. For more information, please refer to our Preconditioning Services section.

**Overview of Characteristics**

+ Exhibits the characteristic

– Does not exhibit the characteristic

1 Hydronephrosis (interference)

2 Hydronephrosis (interference) is found infrequently

I Inbred

O Outbred

H Hybrid



Explore Online Ordering

Access real-time inventory, account pricing, and model specifications.

Get Started →



Dahl/Salt-Sensitive Rats (Dahl/ss)

Strain Code: 320  
Nomenclature: SS/JrHsdMcwiCrl

[Strain Page](#)



SHR Rats

Strain Code: 007  
Nomenclature: SHR/NCrl

[Strain Page](#)



Zucker Rats

Strain Code: 185 (Obese)  
Nomenclature: Crl:ZUC-*Lepr<sup>fa</sup>*

[Strain Page](#)

Strain Code: 186 (Lean)  
Nomenclature: Crl:ZUC-*Lepr<sup>fa</sup>*

[Strain Page](#)

Age in Weeks*	Male Price	Female Price	Male Price	Female Price	Male Price	Female Price	Male Price	Female Price
3 (21-27 days)	268.51	263.43	194.48	188.47	-	-	-	-
4 (28-34 days)	287.65	281.98	209.91	202.20	689.38	663.79	171.82	165.40
5 (35-41 days)	302.48	296.80	232.76	232.46	721.95	695.10	178.68	172.16
6 (42-48 days)	321.11	315.09	248.51	248.11	759.17	730.99	202.24	194.67
7 (49-55 days)	335.33	328.80	272.48	272.26	815.17	784.85	222.72	214.36
8 (56-62 days)	362.00	355.05	298.87	296.94	860.82	828.68	243.27	234.30
9 (63-69 days)	Upon Request	Upon Request	325.39	323.46	904.28	870.92	253.74	244.33
10 (70-76 days)	-	-	357.88	336.65	946.15	911.17	263.93	254.01
11 (77-83 days)	-	-	392.30	368.83	971.39	935.43	275.10	264.79
12 (84-90 days)	-	-	433.14	407.34	1000.39	963.24	291.08	280.38
13 (91-97 days)	-	-	460.34	432.92	1074.10	1034.11	307.96	296.55
14 (98-104 days)	-	-	506.65	476.59	-	-	-	-
15 (105-111 days)	-	-	536.29	504.22	-	-	-	-
16-plus	-	-	Upon Request	Upon Request	-	-	-	-
Retired breeders	-	-	273.78	263.63	-	-	-	282.91
Lactating rat with litter	-	-	-	1208.90	-	-	-	-
Timed pregnant**	-	646.78	-	944.35	-	-	-	-
Untimed pregnant**	-	-	-	885.24	-	-	-	-

\* Estimated age  
\*\* For timed and untimed pregnant, please see our pregnant animal guarantee policy.



ZDF Rats

Strain Code: 370 (Obese fa/fa)  
Nomenclature: ZDF-*Lepr<sup>fa</sup>*/Crl

Strain Page

Strain Code: 380 (Lean fa/+)   
Nomenclature: ZDF-*Lepr<sup>fa</sup>*/Crl

Strain Page



ZSF1 Rats

Strain Code: 378 (Obese)  
Nomenclature: ZSF1-*Lepr<sup>fa</sup>Lepr<sup>cp</sup>*/Crl

Strain Page

Strain Code: 379 (Lean +/-)  
Nomenclature: ZSF1-*Lepr<sup>fa</sup>Lepr<sup>cp</sup>*/Crl

Strain Page

Age in Weeks*	Male Price	Female Price	Male Price	Female Price	Male Price	Female Price	Male Price	Female Price
3-5 (21-41 days)	977.57	697.63	500.76	500.76	1012.35	732.59	397.26	391.65
6 (42-48 days)	1010.09	730.39	535.62	535.62	1049.64	768.70	433.93	427.87
7 (49-55 days)	1043.24	763.83	570.11	570.11	1085.66	805.43	470.60	464.09
8 (56-62 days)	1076.36	796.69	604.24	604.24	1121.80	842.12	506.71	501.29
9 (63-69 days)	1108.98	829.38	639.37	639.37	1158.83	878.88	543.37	537.15
10 (70-76 days)	1147.18	867.66	661.87	661.87	1201.63	921.49	569.20	562.87
11-plus	Upon Request	Upon Request	Upon Request	Upon Request	Upon Request	Upon Request	Upon Request	Upon Request

\* Estimated age  
\*\* For timed and untimed pregnant, please see our pregnant animal guarantee policy.

Laboratory rats are closely related to the human genome and widely used in preclinical toxicology, immunology, cardiovascular, and behavioral studies.

Discover Our Models →



# Mouse Models

---

With more than 100 strains of mouse models, Charles River is positioned to provide you with the mouse models you require to meet your program goals. Our global network of production facilities ensures that you have consistent access to these models, regardless of location.





CD-1® IGS Mice

Strain Code: 022  
Nomenclature: Crl:CD1(ICR)

[Strain Page](#) 

Weight in Grams	Male Price	Female Price
Up to 12	12.15	11.88
13-14	13.30	13.30
15-16	13.37	13.37
17-18	13.37	13.37
19-20	13.65	13.65
21-22	13.85	13.85
23-24	13.85	13.85
25-plus	Upon Request	Upon Request
Retired breeders	13.85	13.14
Lactating mouse with litter	-	145.70
Timed pregnant*	-	103.81
Untimed pregnant*	-	68.54



CF-1™ Mice

Strain Code: 023  
Nomenclature: Crl:CF1

[Strain Page](#)

Weight in Grams	Male Price	Female Price	Male Price	Female Price
Up to 12	14.15	14.15	13.39	13.39
13-15	15.53	15.53	14.49	14.73
16-18	15.60	15.60	14.57	14.80
19-21	15.68	15.68	15.20	15.20
22-24	15.76	15.76	15.52	15.52
25-plus	Upon Request	Upon Request	Upon Request	Upon Request
Retired breeders	15.53	14.96	14.73	14.49
Lactating mouse with litter	-	169.05	-	162.22
Timed pregnant*	-	115.97	-	111.37
Untimed pregnant*	-	76.56	-	73.47

\* For timed and untimed pregnant, please see our pregnant animal guarantee policy.



CFW® Mice (Swiss Webster)

Strain Code: 024  
Nomenclature: Crl:CFW(SW)

[Strain Page](#)

From genetically standard and disease-specific mouse models to surgically altered animals, selecting the appropriate model is critical to your research.

[Compare Models](#) →



**CD1-Elite Mice**  
(VAF/Elite® Health Status)\*\*  
Strain Code: 482  
Nomenclature: Crl:CD1(ICR)

[Strain Page](#)



**SKH1-Elite Mice\*\* +**  
Strain Code: 477  
Nomenclature: Crl:SKH1-*Hr<sup>hr</sup>*

[Strain Page](#)



**Athymic HE**  
(VAF/Elite® Health Status)\*\*  
Strain Code: 491  
Nomenclature: Crl:NU(NCr)-*Foxn1<sup>nu</sup>*

[Strain Page](#)



**NU HE**  
(VAF/Elite® Health Status)\*\*  
Strain Code: 089  
Nomenclature: Crl:NU-*Foxn1<sup>nu</sup>*

[Strain Page](#)

Age in Weeks*	Male Price	Female Price	Male Price	Female Price	Female Price	Female Price
3-5 (21-41 days)	-	-	-	-	22.20	22.20
3 (21-27 days)	38.21	37.69	74.45	74.45	-	-
4 (28-34 days)	38.77	37.98	80.82	80.82	-	-
5 (35-41 days)	39.21	38.21	84.80	84.80	-	-
6 (42-48 days)	39.41	38.77	86.65	86.65	-	-
7 (49-55 days)	55.92	56.98	90.72	90.72	-	-
56-plus	Upon Request	Upon Request	Upon Request	Upon Request	-	-
Retired breeders	-	-	88.30	88.30	-	-
Lactating mouse with litter	-	-	-	659.56	-	-
Untimed pregnant <sup>§</sup>	-	-	-	473.42	-	-

Order, manage, and access the models you need when you need them – on your time in real time.

Get Started →





129-Elite Mice\*\*

Strain Code: 476  
Nomenclature: 129S2/SvPasCrl

[Strain Page](#)



B6 Albino Mice\*

Strain Code: 493  
Nomenclature: B6N-Tyrc-Brd/BrdCrCrl

[Strain Page](#)



NCI B6-Ly5.1/Cr Mice

Strain Code: 564  
Nomenclature: B6.SJL-Ptprc<sup>a</sup>Pepc<sup>b</sup>/BoyCrCrl

[Strain Page](#)



C3H Mice

Strain Code: 025  
Nomenclature: C3H/HeNCrl

[Strain Page](#)

Age in Weeks*	129-Elite Mice**		B6 Albino Mice*		NCI B6-Ly5.1/Cr Mice		C3H Mice	
	Male Price	Female Price	Male Price	Female Price	Male Price	Female Price	Male Price	Female Price
3 (21-27 days)	54.14	58.03	60.97	61.87	71.81	71.81	52.86	54.62
4 (28-34 days)	60.86	65.53	63.60	64.77	77.01	77.01	55.11	56.48
5 (35-41 days)	65.53	69.07	66.14	67.37	82.33	82.33	60.13	60.13
6 (42-48 days)	69.07	73.60	77.49	72.88	87.81	87.81	67.92	64.65
7 (49-55 days)	77.41	81.87	83.33	78.44	93.13	93.13	69.23	65.65
8 (56-62 days)	Upon Request	Upon Request	86.30	86.30	98.44	98.44	73.00	70.90
9 (63-69 days)	-	-	Upon Request	Upon Request	Upon Request	Upon Request	86.09	72.20
10 (70-76 days)	-	-	-	-	-	-	99.03	77.22
11-plus	-	-	-	-	-	-	Upon Request	Upon Request
Retired breeders	45.93	45.57	-	-	62.54	62.54	43.41	43.41
Lactating mouse with litter	-	385.11	-	-	-	-	-	403.92
Timed pregnant§	-	-	-	-	-	-	-	345.75
Untimed pregnant§	-	346.32	-	-	-	-	-	345.75

\* Estimated age  
\*\* Information regarding the VAF/Elite® health profile can be found in the research models overview section.  
\* Isolator-maintained  
§ For timed and untimed pregnant, please see our pregnant animal guarantee policy.



BALB/c-Elite Mice\*\*†

Strain Code: 547  
Nomenclature: BALB/cAnNCrl

[Strain Page](#)



BALB/c Mice

Strain Code: 028  
Nomenclature: BALB/cAnNCrl

[Strain Page](#)



DBA/2 Mice

Strain Code: 026  
Nomenclature: DBA/2NCrl

[Strain Page](#)



SJL-Elite Mice\*\*†

Strain Code: 478  
Nomenclature: SJL/JOrlcoCrl

[Strain Page](#)

Age in Weeks*	BALB/c-Elite Mice**†		BALB/c Mice		DBA/2 Mice		SJL-Elite Mice**†	
	Male Price	Female Price	Male Price	Female Price	Male Price	Female Price	Male Price	Female Price
3 (21-27 days)	66.41	71.69	43.11	45.84	64.50	61.00	53.01	57.03
4 (28-34 days)	68.91	74.12	46.05	47.11	68.16	71.37	56.61	60.08
5 (35-41 days)	70.76	76.33	51.38	50.13	73.39	72.77	59.81	68.22
6 (42-48 days)	78.56	78.84	52.30	50.96	74.80	74.03	63.34	69.07
7 (49-55 days)	82.26	81.26	58.04	54.32	82.08	75.38	66.45	72.67
8 (56-62 days)	85.84	82.98	59.17	55.52	83.58	78.94	Upon Request	Upon Request
9 (63-69 days)	88.55	88.05	60.35	56.51	85.04	79.65	-	-
10-plus	Upon Request	Upon Request	Upon Request	Upon Request	Upon Request	Upon Request	-	-
Retired breeders	56.69	56.69	36.86	36.86	50.54	50.54	45.78	45.78
Lactating mouse with litter	-	-	-	334.79	-	408.39	-	427.14
Timed pregnant§	-	-	-	300.72	-	356.22	-	-
Untimed pregnant§	-	-	-	300.72	-	356.22	-	367.83

\* Estimated age  
\*\* Information regarding the VAF/Elite® health profile can be found in the research models overview section.  
† Isolator-maintained  
§ For timed and untimed pregnant, please see our pregnant animal guarantee policy.



C57BL/6 Mice<sup>\$\$</sup>

Strain Code: 027  
Nomenclature: C57BL/6NCrI

[Strain Page](#) 



C57BL/6-Elite Mice<sup>\*\*\*</sup>

Strain Code: 475  
Nomenclature: C57BL/6NCrI

[Strain Page](#)

Age in Weeks*	Male Price	Female Price	Male Price	Female Price
3 (21-27 days)	41.70	44.85	64.51	70.84
4 (28-34 days)	45.20	46.98	69.50	76.31
5 (35-41 days)	48.84	49.53	73.67	77.62
6 (42-48 days)	56.13	50.58	86.04	79.16
7 (49-55 days)	57.10	52.90	87.77	80.91
8 (56-62 days)	57.70	53.92	89.43	82.50
9 (63-69 days)	59.15	54.96	103.04	83.27
10 (70-76 days)	61.84	55.37	Upon Request	Upon Request
11-plus	Upon Request	Upon Request	-	-
Retired breeders	37.21	36.18	56.17	56.17
Lactating mouse with litter	-	417.60	-	643.39
Timed pregnant <sup>§</sup>	-	370.99	-	-
Untimed pregnant <sup>§</sup>	-	370.99	-	428.33

<sup>\*</sup> Estimated age  
<sup>\*\*</sup> Information regarding the VAF/Elite<sup>®</sup> health profile can be found in the research models overview section.  
<sup>†</sup> Isolator-maintained  
<sup>§</sup> For timed and untimed pregnant, please see our pregnant animal guarantee policy.  
<sup>§§</sup> C57BL/6 mice are raised as age cohorts and shipped as such to minimize aggression, and divided or additional crates may be used to maintain original cohorts. Upon arrival at your facility, we recommend maintaining the housing group to preserve the established hierarchies whenever possible.



Did You Know?

Charles River offers study-ready aged C57BL/6 mice up to 90 weeks of age.

Plan Your Next Study with Aged Mice [→](#)



C57BL/6 Aged Mice\*\*

Strain Code: 701  
Nomenclature: C57BL/6NCrI

Strain Page

Age in Weeks*	Male Price	Female Price	Age in Weeks*	Male Price	Female Price
26	129.03	112.83	53	270.35	271.71
27	132.97	120.68	54	277.13	278.49
28	136.89	129.18	55	284.05	285.41
29	141.03	137.53	56	291.12	292.56
30	145.24	145.96	57	298.40	299.84
31	149.60	150.31	58	305.12	306.62
32	154.09	154.82	59	311.98	313.55
33	158.67	159.45	60	319.77	321.34
34	163.47	164.25	61	326.19	327.76
35	168.32	169.17	62	332.70	334.34
36	173.36	174.24	63	339.33	341.04
37	178.59	179.51	64	346.11	347.82
38	183.95	184.87	65	353.12	354.83
39	189.51	190.45	66	367.31	363.25
40	195.16	196.16	67	374.66	369.11
41	201.02	202.01	68	382.18	376.53
42	206.02	207.09	69	389.82	384.03
43	211.22	212.24	70	393.31	391.75
44	216.52	217.57	71	403.61	399.54
45	221.85	223.01	72	409.59	405.52
46	227.44	228.56	73	412.29	411.66
47	233.14	234.27	74	415.74	417.80
48	238.94	240.14	75	422.01	424.09
49	244.93	246.13	76	428.28	430.43
50	251.08	252.28	77	430.37	432.52
51	257.29	258.57	78-plus	Upon Request	Upon Request
52	263.71	265.08			



FVB Mice

Strain Code: 207  
Nomenclature: FVB/NCrI

Strain Page

Age in Weeks*	Male Price	Female Price
3-4 (21-34 days)	48.19	52.73
5-6 (35-48 days)	55.85	60.58
7-8 (49-62 days)	66.31	69.84
9-10 (63-76 days)	78.61	81.94
11-12 (77-90 days)	90.59	92.43
13-plus	Upon Request	Upon Request
Retired breeders	39.21	39.21
Timed/Untimed pregnant <sup>§</sup>	-	438.03

\* Estimated age  
§ For timed and untimed pregnant, please see our pregnant animal guarantee policy.

C57BL/6 mice are raised as age cohorts and shipped as such to minimize aggression, and divided or additional crates may be used to maintain original cohorts. Upon arrival at your facility, we recommend maintaining the housing group to preserve the established hierarchies whenever possible





B6C3F1 Mice

Strain Code: 031  
Nomenclature: B6C3F1/Crl

[Strain Page](#)



B6D2F1 Mice

Specify BDF1  
Strain Code: 099  
Nomenclature: B6D2F1/Crl

[Strain Page](#)



CB6F1 Mice

Strain Code: 176  
Nomenclature: CB6F1/Crl

[Strain Page](#)



CD2F1 Mice

Specify CDF1  
Strain Code: 033  
Nomenclature: CD2F1/Crl

[Strain Page](#)

Age in Weeks*	Male Price	Female Price	Male Price	Female Price	Male Price	Female Price	Male Price	Female Price
3 (21-27 days)	51.56	56.34	46.72	50.83	53.14	59.19	55.50	57.76
4 (28-34 days)	55.51	58.15	52.34	53.20	54.64	60.69	61.59	59.90
5 (35-41 days)	66.53	64.20	62.73	55.64	56.87	65.32	61.59	62.28
6 (42-48 days)	73.12	64.20	69.36	59.71	60.07	65.32	70.51	66.34
7 (49-55 days)	86.95	64.20	81.47	59.71	60.07	65.32	70.51	66.34
8 (56-62 days)	92.85	64.20	94.31	59.71	67.87	65.32	70.51	66.34
9-plus	Upon Request	Upon Request	Upon Request	Upon Request	Upon Request	Upon Request	Upon Request	Upon Request

\* Estimated age

Our online ordering platform allows you to order, manage, and access the models you need when you need them – on your time in real time.







Ready to Order [→](#)







# Immunodeficient Models

---

Charles River provides a global portfolio of high-quality immunodeficient models tailored to your research needs. Whether your focus is oncology, immunology, or infectious disease, benefit from an infrastructure designed to drive advancements now and in the future when you partner with us.



Characteristic	<div>Triple-Immunodeficient</div> <div></div>					
	NCG/NCG Plus	NOD SCID	NIH-III Nude	Fox Chase SCID® Beige	SCID Hairless Outbred (SHO®)	Fox Chase SCID®
Strain Code	572	394	201 (Homozygous) 202 (Heterozygous)	250	474	236
Hair Coat	Yes	Yes	No	Yes	No	Yes
T Cell Deficient	Yes	Yes	Yes	Yes	Yes	Yes
B Cell Deficient	Yes	Yes	Yes	Yes	Yes	Yes
NK Cell Deficient	Yes	Impaired	Impaired	Impaired	No	No
Species	Mouse	Mouse	Mouse	Mouse	Mouse	Mouse
Genetics	Coisogenic	Congenic	Outbred	Congenic	Outbred	Congenic

Characteristic	<div></div>				<div></div>	<div>Triple-Immunodeficient</div> <div></div>
	BALB/c Nude	NU/NU Nude	Athymic Nude	CD-1® Nude	RNU Nude Rat	SRG Rat®~
Strain Code	194 (Homozygous) 195 (Heterozygous)	088 (Homozygous) 089 (Heterozygous)	490 (Homozygous) 491 (Heterozygous)	086 (Homozygous) 087 (Heterozygous)	316 (Homozygous) 118 (Heterozygous)	707
Hair Coat	No	No	No	No	No	Yes
T Cell Deficient	Yes	Yes	Yes	Yes	Yes	Yes
B Cell Deficient	No	No	No	No	No	Yes
NK Cell Deficient	No	No	No	No	No	Yes
Species	Mouse	Mouse	Mouse	Mouse	Rat	Rat
Genetics	Inbred	Outbred	Outbred	Outbred	Outbred	Inbred

~ Maintained as inbred

# The NCG Plus Portfolio

The NCG Plus Portfolio is a collection of next-generation mouse models based on our triple-immunodeficient NCG mouse. Each additional NCG strain is as immunodeficient as the NCG with additional modifications that offers a specific utility, expanding the scope of your preclinical research in oncology, cell biology, and infectious disease.

Strain Name	Utility	Status
NCG	Triple-immunodeficient (T, B and NK cell deficient) mouse capable of hosting human tissue and/or immune cells. Baseline model for the NCG Plus strains.	Available <ul style="list-style-type: none"><li>Pre-humanized HuPBMC-NCG</li><li>Pre-humanized HuCD34-NCG</li></ul>
NCG-B2m-KO	Delayed onset of xenogeneic GvHD	Available <ul style="list-style-type: none"><li>Pre-humanized HuPBMC-NCG-B2m-KO</li></ul>
NCG-MHC-dKO	Further delays the onset of GvHD in the PBMC model	Available <ul style="list-style-type: none"><li>Pre-humanized HuPBMC-NCG-MHC-dKO</li></ul>
NCG-M	Supports the reconstruction of multiple lineages of human immune cells including myeloid cells	Available
NCG-X	Impairs mouse hematopoiesis allowing for human cell engraftment without myeloablation	Available
NCG-hIL2	NK cell expansion	Available
NCG-hIL15	Higher levels of NK cells	Available
NCG-HLA-A2.1	Allows for functional maturation of human hematopoietic cells	Available



## NCG Mice<sup>†\*</sup>

Strain Code: 572

Nomenclature: NOD-Prkdc<sup>em26Cd52</sup>Il2rg<sup>em26Cd22</sup>/NjuCrl

Strain Page

### Commercial Pricing

Age in Weeks*	Male Price	Female Price
3-4 (21-34 days)	212.18	253.81
5 (35-41 days)	216.23	257.76
6 (42-48 days)	220.24	261.77
7 (49-55 days)	224.26	265.85
8 (56-62 days)	228.22	269.86
9 (63-69 days)	232.28	273.87
10 (70-76 days)	236.24	277.95
11-plus	Upon Request	Upon Request

### Non-Profit/Academic Pricing

Age in Weeks*	Male Price	Female Price
3-7 (21-55 days)	101.22	132.56
8 (56-62 days)	107.98	138.92
9 (63-69 days)	114.72	141.71
10 (70-76 days)	121.47	149.05
11-plus	Upon Request	Upon Request

<sup>†</sup>Coisogenic

<sup>\*</sup>Specialty model. Discounts may not apply.

<sup>\*</sup>Estimated age



NCG-B2m-KO Mice\*

Strain Code: 721  
Nomenclature: NOD/ShiLtJGpt-Prkdc<sup>em26Cd52</sup>Il2rg<sup>em26Cd22</sup>/B2m<sup>em21Cd4</sup>/GptCrl

Strain Page



NCG-MHC-dKO Mice\*

Strain Code: 726  
Nomenclature: NOD/ShiLtJGptPrkdc<sup>em26Cd52</sup>Il2rg<sup>em26Cd22</sup>H2K1<sup>em2Cd10</sup>H2D1<sup>em2Cd6in16de1in5</sup>H2Ab1<sup>em2Cd1</sup>/GptCrl

Strain Page



NCG-X Mice\*

Strain Code: 717  
Nomenclature: NOD/ShiLtJGpt-Prkdc<sup>em26Cd52</sup>Il2rg<sup>em26Cd22</sup>klt<sup>em1Cin(V831M)</sup>/GptCrl

Strain Page



NCG-M Mice\*

Strain Code: 715  
Nomenclature: NOD/ShiLtJGpt-Prkdc<sup>em26Cd52</sup>Il2rg<sup>em26Cd22</sup>Rosa26<sup>em1Cin(hCSF2&IL3&KITLG)</sup>/GptCrl

Strain Page

Commercial Pricing

Age in Weeks*	Male Price	Female Price	Male Price	Female Price	Male Price	Female Price	Male Price	Female Price
3-5 (21-41 days)	239.74	278.46	255.20	296.42	239.74	278.46	239.74	278.46
6 (42-48 days)	244.67	283.39	260.46	301.67	244.67	283.39	244.67	283.39
7 (49-55 days)	249.63	288.33	265.71	306.93	249.63	288.33	249.63	288.33
8 (56-62 days)	254.55	293.27	270.96	312.17	254.55	293.27	254.55	293.27
9 (63-69 days)	261.35	300.05	276.21	317.42	261.35	300.05	261.35	300.05
10 (70-76 days)	268.13	306.84	281.46	322.68	268.13	306.84	268.13	306.84
11-plus	Upon Request	Upon Request	Upon Request	Upon Request	Upon Request	Upon Request	Upon Request	Upon Request

Non-Profit/Academic Pricing

Age in Weeks*	Male Price	Female Price	Male Price	Female Price	Male Price	Female Price	Male Price	Female Price
3-5 (21-41 days)	96.16	125.93	127.67	142.53	96.16	125.93	96.16	125.93
6 (42-48 days)	96.16	125.93	132.92	147.78	96.16	125.93	96.16	125.93
7 (49-55 days)	96.16	125.93	138.18	153.05	96.16	125.93	96.16	125.93
8 (56-62 days)	102.58	131.97	143.43	158.29	102.58	131.97	102.58	131.97
9 (63-69 days)	108.98	134.62	148.68	163.54	108.98	134.62	108.98	134.62
10 (70-76 days)	115.40	141.60	153.93	168.79	115.40	141.60	115.40	141.60
11-plus	Upon Request	Upon Request	Upon Request	Upon Request	Upon Request	Upon Request	Upon Request	Upon Request

\* Estimated age  
\* Specialty model. Discounts may not apply.





# Immunodeficient Mice

Explore a broad portfolio of immunodeficient mice and rats to find the most appropriate model for your oncology study.

[Learn More](#) →



NCG-hIL2 Mice\*

Strain Code: 722  
Nomenclature: NOD/ShiLtJGpt-Prkdc<sup>em26Cd52</sup>Il2rg<sup>em26Cd22</sup>/Gpt-H11<sup>em1Cin(CAG-hIL2)</sup>/GptCrI

[Strain Page](#)



NCG-hIL15 Mice\*

Strain Code: 716  
Nomenclature: NOD/ShiLtJGpt-Prkdc<sup>em26Cd52</sup>Il2rg<sup>em26Cd22</sup>/Il15<sup>em1Cin(hIL15)</sup>/GptCrI

[Strain Page](#)



NCG-HLA-A2.1 Mice\*

Strain Code: 720  
Nomenclature: NOD/ShiLtJGpt-Prkdc<sup>em26Cd52</sup>Il2rg<sup>em26Cd22</sup>/H2-K1<sup>em1Cin(HLA-A2.1)</sup>/GptCrI

[Strain Page](#)

Commercial Pricing

Age in Weeks*	Male Price	Female Price	Male Price	Female Price	Male Price	Female Price
3-5 (21-41 days)	239.74	278.46	239.74	278.46	239.74	278.46
6 (42-48 days)	244.67	283.39	244.67	283.39	244.67	283.39
7 (49-55 days)	249.63	288.33	249.63	288.33	249.63	288.33
8 (56-62 days)	254.55	293.27	254.55	293.27	254.55	293.27
9 (63-69 days)	261.35	300.05	261.35	300.05	261.35	300.05
10 (70-76 days)	268.13	306.84	268.13	306.84	268.13	306.84
11-plus	Upon Request	Upon Request	Upon Request	Upon Request	Upon Request	Upon Request

Non-Profit/Academic Pricing

Age in Weeks*	Male Price	Female Price	Male Price	Female Price	Male Price	Female Price
3-5 (21-41 days)	96.16	125.93	96.16	125.93	96.16	125.93
6 (42-48 days)	96.16	125.93	96.16	125.93	96.16	125.93
7 (49-55 days)	96.16	125.93	96.16	125.93	96.16	125.93
8 (56-62 days)	102.58	131.97	102.58	131.97	102.58	131.97
9 (63-69 days)	108.98	134.62	108.98	134.62	108.98	134.62
10 (70-76 days)	115.40	141.60	115.40	141.60	115.40	141.60
11-plus	Upon Request	Upon Request	Upon Request	Upon Request	Upon Request	Upon Request

\*Estimated age  
\*Specialty model. Discounts may not apply.



**NCG/PBMC Select Humanization Kit\*<sup>†</sup>**

[Learn More](#)



**NCG-B2m-KO/PBMC Select Humanization Kit\*<sup>†</sup>**

[Learn More](#)



**NCG-MHC-dKO/PBMC Select Humanization Kit\*<sup>†</sup>**

[Learn More](#)

**Commercial Pricing**

Age in Weeks <sup>*</sup>	Male Price	Female Price	Male Price	Female Price	Male Price	Female Price
3-4 (21-34 days)	318.32	359.95	345.88	384.61	361.34	402.56
5 (35-41 days)	322.38	363.90	345.88	384.61	361.34	402.56
6 (42-48 days)	326.38	367.92	350.81	389.54	366.60	407.81
7 (49-55 days)	330.40	371.99	355.77	394.48	371.86	413.07
8 (56-62 days)	334.36	376.00	360.69	399.41	377.11	418.31
9 (63-69 days)	338.42	380.01	367.49	406.19	382.36	423.56
10 (70-76 days)	342.38	384.09	374.27	412.98	387.61	428.82
11-plus	Upon Request	Upon Request	Upon Request	Upon Request	Upon Request	Upon Request

**Non-Profit/Academic Pricing**

Age in Weeks <sup>*</sup>	Male Price	Female Price	Male Price	Female Price	Male Price	Female Price
3-5 (21-41 days)	207.36	238.70	202.30	232.07	233.81	248.68
6 (42-48 days)	207.36	238.70	202.30	232.07	239.06	253.93
7 (49-55 days)	207.36	238.70	202.30	232.07	244.32	259.19
8 (56-62 days)	214.12	245.06	208.72	238.12	249.57	264.43
9 (63-69 days)	220.86	247.85	215.13	240.77	254.82	269.68
10 (70-76 days)	227.61	255.19	221.54	247.74	260.07	274.93
11-plus	Upon Request	Upon Request	Upon Request	Upon Request	Upon Request	Upon Request

<sup>\*</sup> The kit is made up of five mice and one vial of 50 million PBMCs or 10 mice and one vial of 100 million PBMCs.  
<sup>†</sup> Shipping of PBMCs is not included in the kit price. Pricing shown is price per mouse. Specialty model. Discounts may not apply.  
<sup>\*</sup> Estimated age



**Did You Know?**

Charles River offers  
Validated Human PBMCs

50 million, cryo  
100 million, cryo

Validated in NCGs.



HuPBMC-NCG Mice<sup>++~</sup>

Strain Page



HuPBMC-NCG-B2m-KO Mice<sup>++~</sup>

Strain Page



HuPBMC-NCG-MHC-dKO Mice<sup>++~</sup>

Strain Page



HuCD34-NCG Mice<sup>~^</sup>

Strain Code: 695  
Nomenclature: NOD-Prkdc<sup>em26Cd52</sup>Il2rg<sup>em26Cd22</sup>/NjuCrl

Strain Page

Commercial Pricing

Age in Weeks <sup>†</sup>	Male Price	Female Price	Male Price	Female Price	Male Price	Female Price
3-4 (21-34 days)	627.33	668.96	654.89	693.62	670.35	711.57
5 (35-41 days)	631.39	672.91	654.89	693.62	670.35	711.57
6 (42-48 days)	635.39	676.93	659.82	698.55	675.61	716.82
7 (49-55 days)	639.41	681.00	664.78	703.49	680.87	722.08
8 (56-62 days)	643.37	685.01	669.70	708.42	686.12	727.32
9 (63-69 days)	647.43	689.02	676.50	715.20	691.37	732.57
10 (70-76 days)	651.39	693.10	683.28	721.99	696.62	737.83
11-plus	Upon Request	Upon Request	Upon Request	Upon Request	Upon Request	Upon Request

Non-Profit/Academic Pricing

Age in Weeks <sup>†</sup>	Male Price	Female Price	Male Price	Female Price	Male Price	Female Price
3-5 (21-41 days)	516.37	547.71	511.31	541.08	542.82	557.69
6 (42-48 days)	516.37	547.71	511.31	541.08	548.07	562.94
7 (49-55 days)	516.37	547.71	511.31	541.08	553.33	568.20
8 (56-62 days)	523.13	554.07	517.73	547.13	558.58	573.44
9 (63-69 days)	529.87	556.86	524.14	549.78	563.83	578.69
10 (70-76 days)	536.62	564.20	530.55	556.75	569.08	583.94
11-plus	Upon Request	Upon Request	Upon Request	Upon Request	Upon Request	Upon Request

\*A minimum of five mice per order is required, then in increasing increments of five animals.  
† Price includes the cost of the mouse and the PBMC injections, as well as the cost associated with the procedure.  
~Specialty model. Discounts may not apply.  
^ The price includes the cost of the mouse and the associated costs of the procedure.  
\* Estimated age

Commercial Pricing

Female Price
1,561.50

Non-Profit/Academic Pricing

Female Price
1,270.98



Athymic Nude Mice\*\*

Strain Code: 490 (Homozygous)  
Nomenclature: Crl:NU(NCr)-Foxn1<sup>nu</sup>

[Strain Page](#)



Athymic Nude Mice\*\* §

Strain Code: 491 (Heterozygous)  
Nomenclature: Crl:NU(NCr)-Foxn1<sup>nu</sup>

[Strain Page](#)



NOD SCID Mice§§

Strain Code: 394  
Nomenclature: NOD.CB17-Prkdc<sup>scid</sup>/NCrCrl

[Strain Page](#)



SCID Hairless Outbred Mice\*\*

Specify SHO®  
Strain Code: 474  
Nomenclature: Crl:SHO-Prkdc<sup>scid</sup> Hr<sup>hr</sup>

[Strain Page](#)

Age in Weeks*	Athymic Nude Mice**		Athymic Nude Mice** §		NOD SCID Mice§§		SCID Hairless Outbred Mice**	
	Male Price	Female Price	Male Price	Female Price	Male Price	Female Price	Male Price	Female Price
3 (21-27 days)	117.46	136.51	35.98	22.20	193.92	205.60	162.44	188.97
4 (28-34 days)	117.46	136.51	35.98	22.20	193.92	205.60	162.44	188.97
5 (35-41 days)	117.46	136.51	35.98	22.20	193.92	205.60	162.44	188.97
6 (42-48 days)	130.26	151.44	46.87	46.65	209.73	226.84	180.08	209.44
7 (49-55 days)	130.26	151.44	57.60	57.17	209.73	226.84	180.08	209.44
8 (56-62 days)	148.00	171.47	Upon Request	Upon Request	Upon Request	Upon Request	204.67	232.86
9 -plus	Upon Request	Upon Request	Upon Request	Upon Request	-	-	Upon Request	Upon Request

\* Estimated age  
\*\* Outbred, isolator-maintained  
§ Heterozygous (haired) animals are not immunodeficient. Call 1.800.522.7287 for pricing and availability.  
§§ Congenic, isolator-maintained.

Are your immunodeficient mice models showing signs of infectious disease? See our clinical case PCR panels.

[Learn More](#) →



CD-1® Nude Mice\*\*  
Specify CD-1® Nude

Strain Code: 086 (Homozygous)  
Nomenclature: Crl:CD1-Foxn1<sup>nu</sup>

Strain Page



Strain Code: 087 (Heterozygous)<sup>§</sup>  
Nomenclature: Crl:CD1-Foxn1<sup>nu</sup>

Strain Page



NU/NU Nude Mice\*\*

Strain Code: 088 (Homozygous)  
Nomenclature: Crl:NU-Foxn1<sup>nu</sup>

Strain Page



Strain Code: 089 (Heterozygous)<sup>§</sup>  
Nomenclature: Crl:NU-Foxn1<sup>nu</sup>

Strain Page

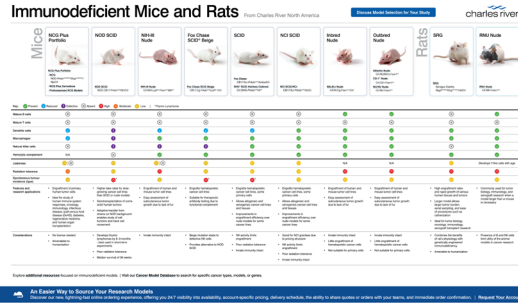
Age in Weeks*	CD-1® Nude Mice**		CD-1® Nude Mice**		NU/NU Nude Mice**		NU/NU Nude Mice**	
	Male Price	Female Price	Male Price	Female Price	Male Price	Female Price	Male Price	Female Price
3 (21-27 days)	124.30	144.46	35.98	35.90	119.69	139.11	37.03	22.20
4 (28-34 days)	124.30	144.46	35.98	35.90	119.69	139.11	37.03	22.20
5 (35-41 days)	124.30	144.46	35.98	35.90	119.69	139.11	37.03	22.20
6 (42-48 days)	137.84	160.27	46.87	46.65	132.75	154.34	48.28	46.92
7 (49-55 days)	137.84	160.27	57.60	57.17	132.75	154.34	59.16	57.81
8 (56-62 days)	155.13	181.45	Upon request	Upon request	149.39	172.95	Upon request	Upon request
9 -plus	Upon request	Upon request	Upon request	Upon request	Upon request	Upon request	Upon request	Upon request

\* Estimated age  
\*\* Outbred, isolator-maintained  
§ Heterozygous (haired) animals are not immunodeficient. Call 1.800.522.7287 for pricing and availability.  
§§ Congenic, isolator-maintained.

Our online ordering platform allows you to order, manage, and access the models you need when you need them – on your time in real time.

Get Started →





# Complimentary Poster

Download our immunodeficient mouse and rat poster.

Unlock Insights →



Fox Chase CB17 SCID® Mice<sup>\$\$</sup>

Strain Code: 236  
Nomenclature: CB17/Icr-Prkdc<sup>scid</sup>/IcrIcoCrI

Strain Page



Fox Chase SCID® Beige Mice<sup>\$\$</sup>

Strain Code: 250  
Nomenclature: CB17.Cg-Prkdc<sup>scid</sup> Lyst<sup>tg-J</sup>/CrI

Strain Page



NCI SCID/NCr Mice<sup>\$\$</sup>

Strain Code: 561  
Nomenclature: CB17/Icr-Prkdc<sup>scid</sup>/IcrCr

Strain Page

Age in Weeks*	Male Price	Female Price	Male Price	Female Price	Male Price	Female Price
3 (21-27 days)	135.03	135.03	153.83	155.35	202.36	202.36
4 (28-34 days)	144.42	144.42	162.82	164.44	206.95	206.95
5 (35-41 days)	154.47	154.47	173.45	173.45	211.26	211.26
6 (42-48 days)	162.63	162.63	183.12	183.12	215.68	215.68
7 (49-55 days)	171.95	171.95	192.13	192.13	220.18	220.18
8 (56-62 days)	Upon Request	Upon Request	Upon Request	Upon Request	224.53	224.53
9-plus	Upon Request	Upon Request	Upon Request	Upon Request	Upon Request	Upon Request

\* Estimated age

<sup>\$\$</sup> Congenic, isolator-maintained



# Charles River Guidebook Series

From breeding practices to behavior and enrichment programs, laboratory animal professionals can gain valuable insight into running an effective an humane vivarium.

Learn More →



## BALB/c Nude Mice\*

Specify BALB/c Nude

Strain Code: 194 (Homozygous) 195 (Heterozygous)

Nomenclature: CAnN.Cg-Foxn1<sup>nu</sup>/Crl

Strain Page



## NIH-III Nude Mice\*\*

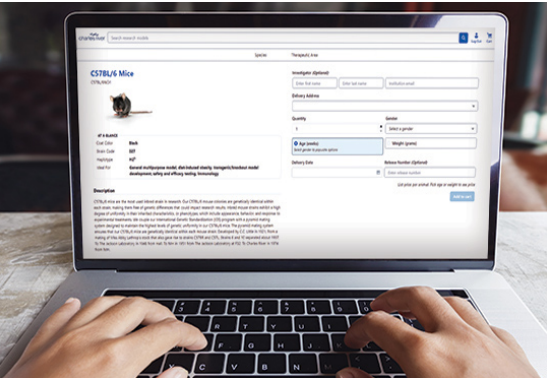
Strain Code: 201 (Homozygous) 202 (Heterozygous)

Nomenclature: Crl:NIH-Ly<sup>tg-tg</sup>-JFoxn1<sup>nu</sup> Btk<sup>xid</sup>

Strain Page

	Male/Female Price	Male/Female Price
Homozygous, either sex nu/nu, 4-5 weeks (28-41 days)*	291.69	182.54
Heterozygous, either sex nu/+, 4-5 weeks(28-41 days)*	104.35	94.06
6 weeks-plus*	Upon Request	Upon Request

\* Estimated age  
\*\* Outbred, isolator-maintained  
\* Inbred, isolator-maintained



# Experience Online Ordering

Charles River provides a global portfolio of high-quality immunodeficient models tailored to your research needs with a faster, more dynamic, and sharable instant ordering system.

[Learn More](#)



## RNU Nude Rats\*\*

Specify RNU  
Strain Code: 316 (Homozygous)  
Nomenclature: Crl:NIH-Foxn1<sup>nu</sup>

Strain Page



## SRG Rats® + + ~

Specify RNU/+ He  
Strain Code: 118 (Heterozygous)<sup>§</sup>  
Nomenclature: Crl:NIH-Foxn1<sup>nu</sup>

Strain Page

Strain Code: 707  
Nomenclature: Sprague Dawley-  
Rag2<sup>em2hera</sup>Il2rg<sup>em1hera</sup>/HbICrl

Strain Page

Age in Weeks*	Male Price	Female Price	Male Price	Female Price	Commercial Price	Academic Price
3 (21-27 days)	289.50	294.87	113.57	76.62	474.78	379.83
4 (28-34 days)	362.33	362.33	129.26	76.62	495.22	408.90
5 (35-41 days)	435.28	435.28	145.19	76.62	515.67	437.98
6 (42-48 days)	502.60	502.60	176.54	176.54	536.11	467.06
7 (49-55 days)	576.00	576.00	208.06	208.06	556.56	496.14
8 (56-62 days)	642.30	642.30	239.42	239.42	577.01	525.22
9 (63-69 days)	710.73	717.18	270.68	270.68	597.45	554.29
10 (70-76 days)	727.04	733.84	295.71	295.71	617.89	583.37
11 (77-83 days)	Upon Request	Upon Request	Upon Request	Upon Request	638.34	612.45
12 (84-90 days)	-	-	-	-	658.79	641.52
13 (91-97 days)	-	-	-	-	679.21	670.60
14 (98-104 days)	-	-	-	-	699.67	699.67

\* Estimated age  
\*\* Outbred, isolator-maintained  
§ Heterozygous (haired) animals are not immunodeficient. Call 1.800.522.7287 for pricing and availability.  
" SRG Rat® is a registered trademark of Hera Biolabs. SRG Rat® registered trademark is used with permission from Hera Biolabs. Commercial use of the SRG may be further subject to Hera Biolabs' Conditions of Use.  
~ Maintained as inbred

# Human Immune Cells and Stem Cells

Did you know Charles River provides human immune and stem cells? Human immune cells are derived from apheresis collections from healthy human donors for human cell studies in our immunodeficient mouse and rat models. Available immune cell products include leukopaks (normal and mobilized), PBMCs, isolated T cells, antigen-specific T cells, NK cells, macrophages, and monocytes. We also provide human stem cell products derived from mobilized leukopaks, bone marrow, or cord blood sources. Purification, isolation, and cryopreservation of isolated cells are performed onsite immediately after collection.

Learn More →

Human PBMCs	Product Code	Price
Mononuclear Cells (PBMCs), 10M, Cryo	PB009C-1	\$155
Mononuclear Cells (PBMCs), 25M, Cryo	PB009C-2	\$250
Mononuclear Cells (PBMCs), 50M, Cryo	PB009C-50	\$375
Mononuclear Cells (PBMCs), 100M, Cryo	PB009C-3	\$530

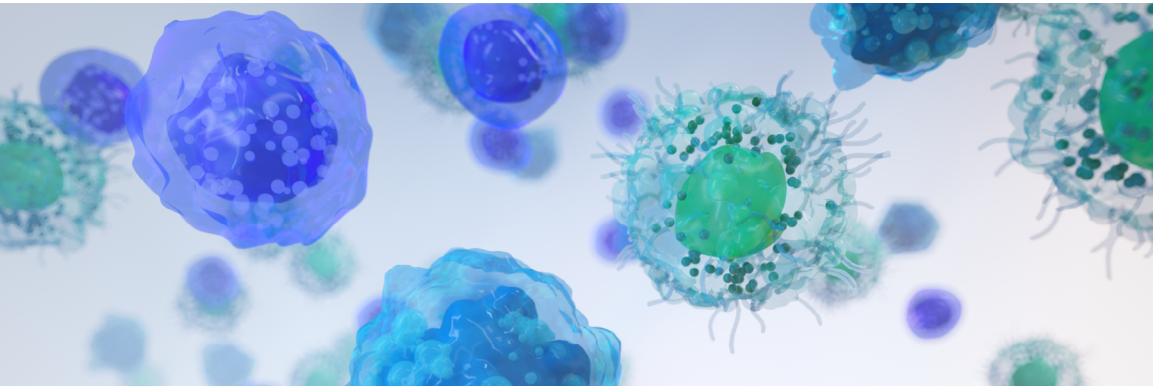
Learn More →

## PBMCs and CD34+ Stem Cells for Humanization of Immunodeficient Mice

Human peripheral blood mononuclear cells (PBMCs) from a diverse and highly characterized pool of recallable donors are available for purchase and can be used to develop humanized mouse models.

Human CD34+ hematopoietic stem cells isolated from a diverse and highly characterized pool of recallable donors are available for purchase and can be used to develop humanized mouse models. CD34+ cells are available from mobilized peripheral blood, bone marrow, or cord blood.

Interested in NCG mice humanized with validated PBMC cells? [Learn More →](#)



CD34+ Stem Cells	Product Code	Price
CD34+ Stem Cells, Mobilized-GCSF, 1M, Cryo	M34C-GCSF-1	\$1,175
CD34+ Stem Cells, Mobilized-GCSF, 5M, Cryo	M34C-GCSF-2	\$4,165
CD34+ Stem Cells, Mobilized-GCSF, 10M, Cryo	M34C-GCSF-3	\$6,100
CD34+ Stem Cells, Mobilized-Plerixafor, 1M, Cryo	M34C-MOZ-1	\$1,920
CD34+ Stem Cells, Mobilized-Plerixafor, 5M, Cryo	M34C-MOZ-2	\$4,965
CD34+ Stem Cells, Mobilized-Plerixafor, 10M, Cryo	M34C-MOZ-3	\$7,390
CD34+ Stem Cells, Mobilized-Dual, 1M, Cryo	M34C-GCSF-MOZ-1	\$2,555
CD34+ Stem Cells, Mobilized-Dual, 5M, Cryo	M34C-GCSF-MOZ-2	\$5,750
CD34+ Stem Cells, Mobilized-Dual, 10M, Cryo	M34C-GCSF-MOZ-3	\$8,200
CD34+ Stem Cells, Bone Marrow, 100K, Cryo	BM34C-1	\$495
CD34+ Stem Cells, Bone Marrow, 250K, Cryo	BM34C-2	\$715
CD34+ Stem Cells, Bone Marrow, 500K, Cryo	BM34C-3	\$1,045
CD34+ Stem Cells, Cord Blood, 100K, Cryo	CB34C-1	\$1,000
CD34+ Stem Cells, Cord Blood, 500K, Cryo	CB34C-2	\$1,920
CD34+ Stem Cells, Cord Blood, 1M, Cryo	CB34C-3	\$2,905

Learn More →

# Rabbit, Guinea Pig, Gerbil, and Hamster Models

---

Due to the multifaceted nature of most diseases, their study often necessitates a multidisciplinary approach. To support your research program's needs, we offer a variety of research models, including species beyond the traditional mouse and rat models.







LVG Golden Syrian Hamsters

Strain Code: 049  
Nomenclature: Crl:LVG(SYR)

Strain Page



Mongolian Gerbils

Strain Code: 243  
Nomenclature: Crl:MON(Tum)

Strain Page



Hartley Guinea Pigs

Strain Code: 051  
Nomenclature: Crl:HA

Strain Page

Weight in Grams	Male Price	Female Price	Weight in Grams	Male Price	Female Price	Weight in Grams	Specified Sex	Either Sex
Up to 50	71.74	71.74	Up to 40	179.61	171.00	Up to 200	227.07	164.01
51-60	79.27	79.27	41-50	184.87	179.61	201-250	253.43	178.85
61-70	86.26	86.26	51-60	198.98	184.87	251-300	268.43	193.11
71-80	97.32	97.32	61-70	204.97	192.22	301-350	284.05	205.37
81-90	109.39	109.39	71-80	211.99	204.97	351-400	299.30	217.39
91-100	122.43	122.43	81-90	223.70	-	401-450	315.08	227.07
101-110	131.95	131.95	91-plus	Upon Request	Upon Request	451-500	329.51	238.49
111-120	137.50	137.50	Retired breeders	179.61	179.61	501-550	355.36	260.36
121-plus	Upon Request	Upon Request	Proven breeder pair	-	510.70	551-plus	Upon Request	Upon Request
Retired breeders	111.45	111.45	Untimed pregnant	-	536.22	Retired Breeders	76.09	76.09
Timed pregnant	-	255.70	Lactating mother with pups	-	562.35			

Reimagine how you responsibly source your research models with a focus on the 3Rs and low-stress handling.

Watch Our Webinar →



New Zealand White Rabbits\*

Strain Code: 052  
Nomenclature: Crl:KBL(NZW)

Strain Page

Weight in Kgs	Specified Sex Price	Either Sex Price
0.8-1.2¹	95.02	-
1.3-1.6	273.88	233.87
1.7-2.0	316.70	273.88
2.1-2.4	359.46	316.70
2.5-2.8	412.59	361.24
2.9-3.2	508.40	462.16
3.3-3.6	579.54	525.85

Pregnant animal pricing and additional services available upon request. Please see our pregnant animal guarantee policy.

\*See our research models overview section for rabbit cancellation policy.

¹Males only

Shipping Cage Mates and Littermates

We can ship cage mates and littermates weighing less than 2.5 kg together in the same box without dividing them, which helps maintain their bond during transit. Additionally, these rabbits stay in constant contact throughout the order preparation process, remaining together to preserve their connection.

We offer an acclimatization program for feeding rabbits, with options including LabDiet® 5322 and 5325. A 14- or 20-day adapted program is available. To enhance the rabbits’ experience during transport, we can add loose hay and hay cubes to the shipping boxes.



Get real-time access to inventory and pricing, we’ve reimaged how you responsibly source your research models.

Ready to Order →

# NCI Grantee Models

---

For more than 25 years, the National Cancer Institute (NCI) has partnered with Charles River to maintain and produce their research animal models in a dedicated vivarium. In 2014, Charles River assumed full management and operational responsibilities for the NCI models and continue to breed and maintain those colonies today.

As an NCI Grantee, you have access to preserved pricing. Access high quality models with the same quality and genetic standards of Charles River Laboratory models.





NCI C57BL/6NCr Mice

Strain Code: 556

Learn More

NCI BALB/cAnNCr Mice

Strain Code: 555

Learn More

Outbred Model

NCI Cr:SW Mice (Swiss Webster)

Strain Code: 551

Learn More

Hybrid and Congenic Model

NCI B6-Ly5.1/Cr Mice<sup>†</sup>

Strain Code: 564

Learn More

Age in Weeks <sup>*</sup>	Male Price	Female Price	Male Price	Female Price	Male Price	Female Price	Male Price	Female Price
3 (21-27 days)	35.42	35.42	34.98	34.98	10.44	10.44	41.63	41.63
4 (28-34 days)	35.42	35.42	34.98	34.98	10.44	10.44	41.63	41.63
5 (35-41 days)	35.42	35.42	34.98	34.98	10.44	10.44	41.63	41.63
6 (42-48 days)	35.42	35.42	34.98	34.98	10.44	10.44	41.63	41.63
7 (49-55 days)	35.42	35.42	34.98	34.98	10.44	10.44	41.63	41.63
8 (56-62 days)	35.42	35.42	34.98	34.98	10.44	10.44	49.35	49.35
9 (63-69 days)	40.03	35.42	34.98	34.98	16.72	16.72	57.14	57.14
10 (70-76 days)	44.02	40.03	38.11	38.11	18.08	18.08	62.80	62.80
Retired breeders	26.00	26.00	26.54	26.54	10.10	10.10	39.15	39.15
Lactating mouse with litter	-	211.98	-	247.02	-	112.31	-	-
Untimed pregnant <sup>§</sup>	-	176.70	-	185.28	-	50.25	-	-

<sup>\*</sup> Estimated age

<sup>§</sup> For untimed pregnant, please see our pregnant animal guarantee policy.

<sup>†</sup> Congenic



NCI Athymic NCr-nu/nu Mice

Strain Code: 553

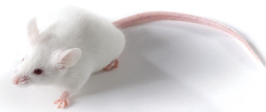
[Learn More](#)



NCI Athymic NCr-nu/+ Mice<sup>§</sup>

Strain Code: 554

[Learn More](#)



NCI SCID/NCr Mice

Strain Code: 561

[Learn More](#)

Age in Weeks*	NCI Athymic NCr-nu/nu Mice		NCI Athymic NCr-nu/+ Mice <sup>§</sup>		NCI SCID/NCr Mice	
	Male Price	Female Price	Male Price	Female Price	Male Price	Female Price
3 (21-27 days)	95.11	95.11	55.45	55.45	122.74	122.74
4 (28-34 days)	95.11	95.11	55.45	55.45	122.74	122.74
5 (35-41 days)	95.11	95.11	55.45	55.45	122.74	122.74
6 (42-48 days)	95.11	95.11	55.45	55.45	122.74	122.74
7 (49-55 days)	95.11	95.11	55.45	55.45	122.74	122.74
8 (56-62 days)	97.38	97.38	59.34	59.34	127.33	127.33
9 (63-69 days)	101.62	101.62	63.32	63.32	132.07	132.07
10 (70-76 days)	105.63	105.63	67.27	67.27	136.57	136.57
Retired breeders	93.54	-	-	37.38	115.09	115.09
Lactating mouse with litter	-	-	-	366.17	-	332.31
Untimed pregnant**	-	-	-	341.84	-	306.85

\*Estimated age

\*\* For untimed pregnant, please see our pregnant animal guarantee policy.

§Heterozygous (haired) animals are not immunodeficient. Call 1.800.522.7287 for pricing and availability.



NCI Grantee Program

As an NCI Grantee, you have access to preserved pricing. Access high quality models with the same quality and genetic standards of Charles River Laboratory models.

[Learn More](#) →

Characteristic	NCI Athymic NCr-nu/nu	NCI SCID/NCr
Hair Coat	No	Yes
T Cell Deficient	Yes	Yes
B Cell Deficient	No	Yes
NK Cell Deficient	No	No
Species	Mouse	Mouse
Genetics	Outbred	Congenic

## Equivalent/Alternative Models

The Charles River models listed below can be used as an equivalent/alternative option if the NCI models are not available at the specifications you require\*.

NCI Model	Charles River Equivalent/Alternative
<b>Outbred Mice</b>	
NCI Cr:SW (Swiss Webster)	CFW® (Swiss Webster)
<b>Inbred Mice</b>	
NCI BALB/cAnNCr	BALB/c
NCI C57BL/6NCr	C57BL/6
<b>Immunodeficient Models</b>	
NCI Athymic NCr-nu/nu	Athymic Nude Mice - Homozygous
NCI Athymic NCr-nu/+	Athymic Nude Mice - Heterozygous
NCI SCID/NCr	Fox Chase SCID® Mice (C.B-17 SCID)

\* Prices may vary slightly.



## NCI Grantee Program

These models are produced under the same stringent biosecurity guidelines and humane and ethical treatment principles found at all of our global production sites.

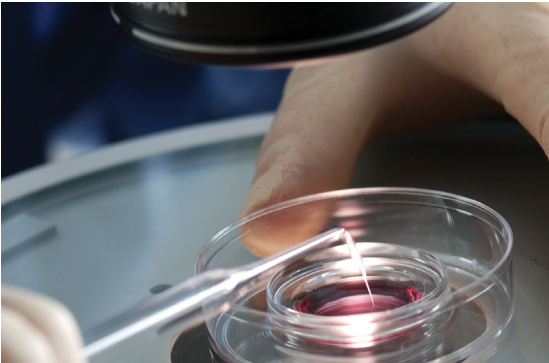
Learn More →



# Cryopreserved

All strains listed below are currently maintained as cryopreserved models. **Please allow a minimum of 12-15 weeks for delivery.** A dedicated supply can be established for large orders and breeding pairs may be available for select models. Contact our Genetically Engineered Models and Services Department at [GEMSServices@crl.com](mailto:GEMSServices@crl.com) for pricing and availability.

Model	Common Name	Nomenclature	Coat Color	Therapeutic Area
Immunodeficient Mouse	hACE2-NGC Mice	NOD/ShiLtJGpt-Prkdc <sup>em26Cd52</sup> IL2rg <sup>em26Cd22</sup> Ace2 <sup>em1Cin(hACE2)</sup> /GptCRL	White (albino)	SARS-CoV-2 and Infectious Disease
Immunodeficient Mouse	NGC Hairless	NOD/ShiLtJGpt-Prkdc <sup>em26Cd52</sup> Il2rg <sup>em26Cd22</sup> /H <sup>rem1Cin8936</sup> /GptCrl	White	Immuno-Oncology, Immunology, Infectious Disease, Metabolic Disease, Oncology
Immunodeficient Mouse	NGC-tdTomato	NOD/ShiLtJGpt-Prkdc <sup>em26Cd52</sup> Il2rg <sup>em26Cd22</sup> /H <sup>11em1Cin(tdTomato)</sup> /GptCrl	White	Immuno-Oncology, Immunology, Infectious Disease, Metabolic Disease, Oncology
Immunodeficient Mouse	NGC-hCD47	NOD/ShiLtJGpt-Prkdc <sup>em26Cd52</sup> Il2rg <sup>em26Cd22</sup> /Cd47 <sup>em1Cin(hCD47)</sup> /GptCrl	White	Immuno-Oncology, Immunology, Infectious Disease, Metabolic Disease, Oncology
Immunodeficient Mouse	NGC-hBAFF	NOD/ShiLtJGpt-Prkdc <sup>em26Cd52</sup> Il2rg <sup>em26Cd22</sup> /Baff <sup>em1Cin(hBAFF)</sup> /GptCrl	White	Immuno-Oncology, Immunology, Infectious Disease, Metabolic Disease, Oncology



## Webinar Series

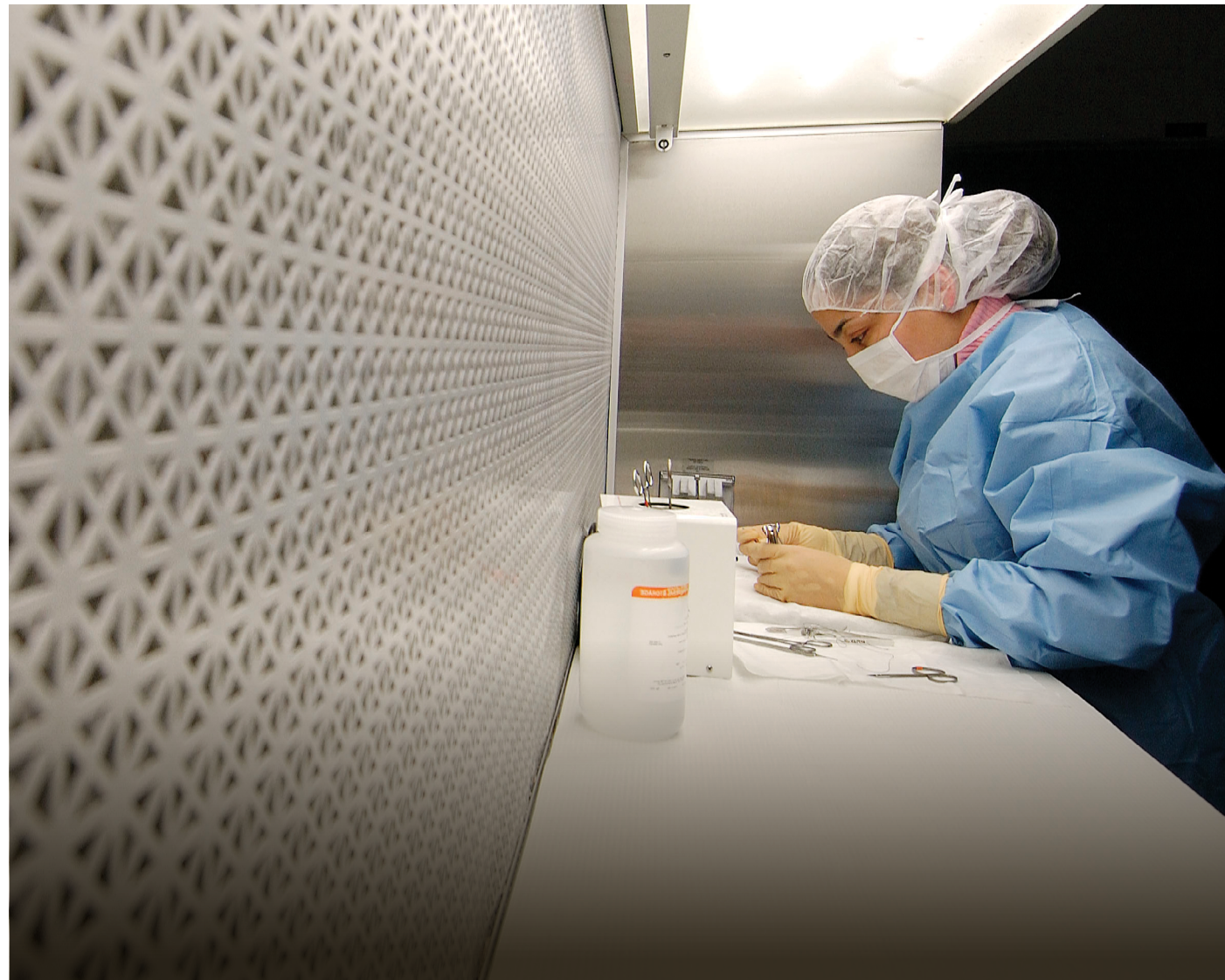
Access our comprehensive webinar series on the complexities of genetically engineered models. Whether you have challenging breeding schemes, need to rapidly expand your colony, or want to save money by cryopreserving important lines, this series is for you.

Listen Today →

# Rodent Surgery, Biospecimen, Other Services

Preconditioning services can help alleviate the space, time, and labor costs involved with refining a model to meet your unique research requirements. Whether you are looking for animals fed a special diet, altered through surgery, or reared to a certain age, Charles River has the state-of-the-art animal facilities, professional animal care, and robust model selection to deliver study-ready animals right to your door.

Get Started →



## Preconditioned Models

Charles River can provide preconditioned models that meet your exact study needs, saving you space, time, and labor costs. Our husbandry procedures utilize strict biosecurity guidelines developed under the direction of the professional staff at our AAALAC-accredited facilities. Some of the services we offer include:

- Pre-ID™ species and services
- Pre-dosing/pre-injection services
- Custom diets
- Aging services
- Rodent surgery

Any of these services can be used, alone or in combination, based on your needs. For further information, please contact Customer Service at [ResearchModels@crl.com](mailto:ResearchModels@crl.com), or [request a quote online](#).

[Learn More](#) →

## Rodent Surgery

Many of our surgical procedures can be combined into one order. For more information regarding combination procedures or to place an order, please contact Customer Service at 1.800.522.7287. You can also [request a quote](#) for any of our surgical procedures.

### Animal Surgery Products & Services

- Vascular catheterizations
- Non-vascular catheterizations
- Soft tissue procedures
- Neurological procedures
- Device implants
- Accessories for catheterized rodents

[Learn More](#) →

## Rodent Biospecimens

Charles River provides mouse and rat biospecimen products direct from our Research Model colonies. Precision in sample collection by Charles River experts ensures consistency



in biospecimen quality, supports the 4Rs and enables you to reach discovery milestones faster with robust reproducible results.

### Available research animal model tissues and blood products include:

- Mouse (Strains available: CD-1, C57BL/6, BALB/C)
  - Brain (Fresh or Frozen)
  - Liver (Fresh or Frozen)
  - Plasma (Frozen, K2EDTA)
  - Serum (Frozen)
  - Whole Blood (Fresh, K2EDTA or SODHEP)

- Rat (Strain available: CD)
  - Brain (Fresh or Frozen)
  - Plasma (Frozen, K2EDTA)
  - Serum (Frozen)
  - Whole Blood (Fresh, K2EDTA or SODHEP)

Support for collection of other organs and tissue types is available, including specialized procedures. Contact [ResearchModels@crl.com](mailto:ResearchModels@crl.com) to discuss your requirements

[Learn More](#) →



# Research Animal Diagnostics Services

---

Charles River Research Animal Diagnostic Services is the only comprehensive partner that offers solutions from prevention to resolution. Through innovations like the HemaTIP™ Microsampler, PathogenBinder®, and Exhaust Air Dust (EAD®) testing with our PCR Rodent Infectious Agent (PRIA®) panels, we can efficiently manage your animal health surveillance program.

Our complementary services include consultations with Charles River professional scientific staff as well as access to [Laboratory Testing Management](#)® (LTM™). LTM™ is an online, free, and secure system to store and access testing records and results. We offer complimentary sample collection, shipping supplies, and retesting.



# Alternative (Sentinel-Free) Programs

As alternatives to sentinel-based animal health monitoring, Charles River offers the PathogenBinder® sentinel-free, soiled-bedding (SFSB) sampling system, Exhaust Air Dust (EAD®) sampling, and survival samples (fecal pellet, body swabs, oral swabs) directly collected from colony animals. These sampling methods capture nucleic acids associated with viruses, bacteria, parasites, and other infectious agents. In combination with the

increased sensitivity and specificity of PCR testing, sentinel-free sampling systems enable effective and non-invasive screening of animal health, while accommodating all types of caging/housing systems.

Sentinel-free sampling not only reduces or eliminates the need for sentinels, but it also increases the probability of detecting infectious agents that are not readily detected in soiled bedding sentinels due to inadequate transmission, infection, or detection. Any of our standard PRIA® panels can be used or customized to more specifically meet your needs.

Rack Type	Sample Type Options
Individually ventilated cages (IVC) with no cage-level filtration	PathogenBinder® Pooled EAD swabs EAD in-line filter device Direct colony sampling†
Individually ventilated cages (IVC) with cage-level filtration	PathogenBinder® Direct colony sampling†
Static filter-top cages	PathogenBinder® Direct colony sampling†
Conventional open-top cages	PathogenBinder® Pooled environmental swabs§ Direct colony sampling†

\* E.g., plenum swab, pre-filter swab, and/or exhaust hose swab: can be pooled up to 10:1  
† Caging manufacturer sample collection device  
\* E.g., fecal pellets, body swab, and oral swabs can be pooled up to 10:1 by sampling type  
§ Swab various surfaces that are in contact with resident animals can be pooled up to 10:1.

# PathogenBinder® Kit

Available exclusively from Charles River, PathogenBinder® is a novel, soiled-bedding sampling method for detecting rodent pathogens without the need for a sentinel animal.

The Kit features PathogenBinder contact media, which is designed to maximize collection of particles and nucleic acids associated with infectious agents from soiled bedding. The media has been decontaminated by electron beam (E-Beam) treatment to minimize the risk of potential exposure to microbes in isolator-reared or ultra-clean health status animals.

The Kit also contains the PathogenBinder collection box, which is recommended for optimal exposure of the media to soiled bedding. Alternatively, a rodent cage may be used. Sterile conical tubes are supplied for PCR sample submission.

# For Health Monitoring

The PathogenBinder sampling protocol for health monitoring requires collection of soiled bedding at each cage change, followed by exposure of the bedding to contact media by agitation. A three-month monitoring period is recommended.

# For Quarantine Testing

The PathogenBinder sampling protocol for quarantine testing requires animals to be housed with transport bedding for one-week post-arrival, followed by exposure of the bedding to contact media by agitation. Alternatively, bedding from transport crate and quarantine cages can be agitated upon arrival and one-week time point respectively.

Contact our [Lab Services team](#) and talk with a professional staff member for questions regarding the PathogenBinder Kit.

Learn More →

## PRIA PCR Panels

Our PRIA® PCR panels provide you with the ability to monitor for vast numbers of agents from a single sample source. Services are available for screening colony animals directly, for screening indirectly via environmental sampling, for exhaust air dust (EAD®) testing, or PathogenBinder®.

Custom panels available upon request. Agent lists for other panels, such as Prevalent, Tracking, and Surveillance Plus, can be found in LTM™.

[Learn More →](#)

### PRIA® PCR Panels - Direct Animal, EAD®, PathogenBinder®

- Mouse
- Rat
- Guinea Pig
- Rabbit
- Gerbil
- Hamster

### Clinical Case PCR Panels for Immunodeficient Mice

Due to their genetic background and impaired immune function, immunodeficient mice (especially those with high degrees of immunodeficiency) are more susceptible to disease. These infectious agents can be ubiquitous in the environment (as commensals in immunocompetent mice or caretakers) and therefore are not commonly part of routine screening programs. The tests featured on these panels are tools for veterinarians to support or refute the association of an infectious agent with clinical symptoms.

- Gastrointestinal tract (diarrhea)
- Upper respiratory and auditory tracts (head tilt)
- Skin (dermatitis, dry flaky skin)
- Limbs (mobility problems, inflammation)



## PathogenBinder® Webinar

Access our PathogenBinder® webinar to hear our scientific experts discuss starting a sentinel-free soiled-bedding health monitoring system at your facility.

[Watch Now →](#)



# Genetic Monitoring Services

Marker-assisted accelerated backcrossing (MAX-BAX®) could save at least a year and a half of breeding by screening the background strain genetics of your research animals and selecting those with the highest percentage of the desired background. Our MAX-BAX® service is a custom microarray platform that utilizes robust fluorescence-based assays. The 384 SNP marker screens are strategically spaced across the genome to analyze common polymorphisms found between inbred strains.

## Background Strain Characterization

Service	Description
Mouse MAX-BAX® speed congenics*	Marker-assisted accelerated backcrossing utilizing 384 SNP panel
Background strain characterization (BSC)	Mouse 384 SNP or rat 240 SNP complete background analysis panels
C57BL/6 mouse substrain panel†	128 SNP
SNP QC (mouse and rat panels available)	32-marker assay for contamination detection

\* See below 'MAX-BAX® Congenic Strain Production Strategies' for additional information.  
† The 128 SNP panel is used to differentiate between the mouse C57 substrains. Animals should be confirmed C57 congenic (>98% C57 by 384 SNP) prior to testing; the BSC Mouse 384 SNP complete background analysis panel is available for this confirmation step.

Learn More →



## Cell Line & Research Biologics Sample Collection Kit

The Cell Line & Research Biologics Sample Collection Kit is designed to make submitting your samples as quick and easy as possible. Features of the new kit, which may be requested using our [Shipping Supply Request form](#), include:

- Tubes with buffer and clear instructions in a ready-to-use kit
- A transport buffer, which stabilizes samples during shipment. View the qualification summary from studies completed by our scientists.
- Shipment at ambient temperature; no dry ice needed

[Learn More](#) →

### PCR Panels to Screen Cell Lines and Research Biologics for Rodent Infections Agents

Our CLEAR (cell line examination and report) PCR Panels are performed non-GXP; this service is available for research purposes only. Once you are ready to submit samples, [visit LTM™](#) to create your order online.

[Learn More](#) →

### PCR Panels to Screen Cell Lines and Research Biologics for Human Infectious Agents

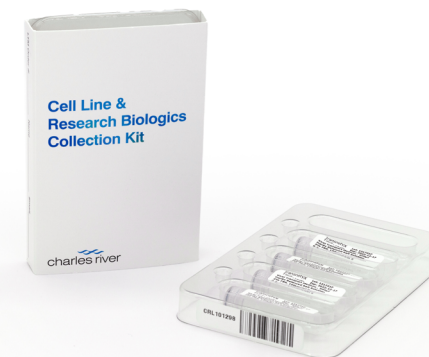
Our CLEAR (cell line examination and report) PCR Panels are performed non-GXP; this service is available for research purposes only. Once you are ready to submit samples, [visit LTM™](#) to create your order online.

[Learn More](#) →

### Contamination CLEAR

Our CLEAR (cell line examination and report) PCR Panels are performed non-GXP; this service is available for research purposes only. Once you are ready to submit samples, [visit LTM™](#) to create your order online.

[Learn More](#) →



## Cell Line Testing Kits

Ensure your research is pathogen-free with our convenient sample collection kits, which require no dry ice, for screening your research biologics.

[Request Your Free Kit](#) →

# Traditional Whole-Animal Rodent and Rabbit Sentinel Program

Whole animals can be submitted for a health monitoring (HM) protocol – samples will be collected in our necropsy laboratory and screened for the presence of infectious agents. Also, services offered as part of an HM protocol are available individually – samples can be collected at your facility and submitted directly to our laboratory for testing. Customized and FELASA-compliant testing is available upon request.

Learn More [→](#)

Protocol	Species	Serology*	PCR*	Microbiology†	Parasitology	Pathology
HM Basic	Mouse, rat, hamster, guinea pig, rabbit, and gerbil	(None)	Lawsonia (hamster only)			
HM Basic (Immunodeficient)	Mouse and rat	(None)	C.bovis, Pneumocystis, and Mycoplasma pulmonis (mouse only)			
HM Prevalent	Mouse and rat	Prevalent	(None)	Upper respiratory and gastrointestinal tracts	Endoparasite and ectoparasite exams	Gross necropsy with histology of lesions
HM Standard	Mouse, rat, guinea pig, and rabbit	Tracking	(None)			
HM Assessment	Mouse, rat, hamster, guinea pig, rabbit, and gerbil	Assessment	Lawsonia (hamster only)			
HM Plus	Mouse and rat	Assessment Plus	(None)			
HM Plus without Microbiology	Mouse and rat	Assessment Plus	(None)	(None)		
HM Quarterly FELASA	Mouse and rat	FELASA Quarterly	Helicobacter	Upper respiratory and gastrointestinal tracts		
HM Annual FELASA	Mouse and rat	FELASA Annual	Helicobacter			
Build your own custom protocol	Mouse, rat, hamster, guinea pig, rabbit, and gerbil					

*\* For a full list of serology agents, please see serology profiles section.*  
*\* In addition to the included PCR tests, samples can be collected and screened for the agent(s) of your choice (e.g., Helicobacter) for an added fee.*  
*\* For more information on microbiology services, please see microbiology culture section.*

# Hybrid Rodent Health Surveillance Programs

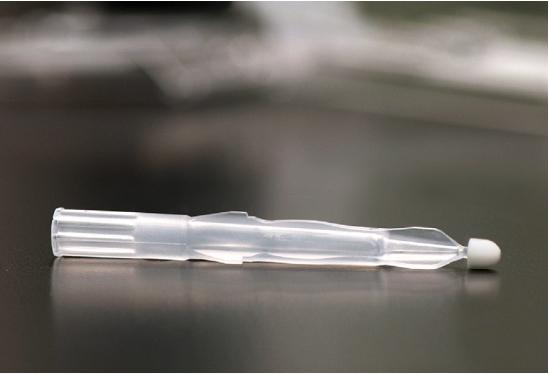
Hybrid approaches to health monitoring involve alternating between traditional sentinel testing and sentinel-free, PCR-based sampling at routine monitoring timepoints. For example, sentinel serology could be performed for the first sampling followed by PCR at the next timepoint utilizing one of the sampling options listed in the table below.

Learn More →

Housing Type	Test Methodology	Sampling Option(s)
Individually ventilated caging (IVC)	Sentinel serology	Blood/Serum
	PCR	EAD® pooled plenum swabs* EAD® in-line collection device* PathogenBinder® Direct Colony Sampling**
Static filter-top microisolator caging	Sentinel serology	Blood/Serum
	PCR	PathogenBinder® Direct Colony Sampling**
Conventional open-topped caging	Sentinel serology	Blood/Serum
	PCR	Environmental room swabs PathogenBinder® Direct Colony Sampling**

\* = For EAD® compatible IVC rack types

\*\* = Fecal pellets, body swabs, and oral swabs



## HemaTIP™ Microsampler

HemaTIP™ eliminates the reagents, materials, and equipment needed to prepare and ship serum samples.

Learn More →

## Microbiology Culture

This service can be used in conjunction with an [environmental monitoring](#) (e.g., feed, bedding, water) or animal health surveillance program, and diagnostic evaluation. Live animals, samples (e.g., swabs, transport media), and organisms for identification can be collected at your facility and submitted directly to our laboratory for testing. Efficient and accurate microbial identifications are made using MALDI-TOF mass spectrometry or VITEK 2 platforms. Once you are ready to submit samples, [visit LTM™](#) to create your order online.

### Antimicrobial Susceptibility Testing (AST)

Timely and relevant antimicrobial treatment is key to managing bacterial infections in animal colonies. Antimicrobial susceptibility testing is available as an add-on service to bacterial culture and identification. Automated VITEK2 or Kirby Bauer method will be used as determined by organism identification. A fixed panel of antimicrobials, clinically relevant to isolated species, will be tested to measure susceptibility. Reports provide an interpretation

(susceptible/intermediate/resistant) and minimum inhibitory concentration (MIC) values when applicable.

[Learn More](#) →

### Parasitology

Endo- and ectoparasites continue to be a significant concern for laboratory animal facilities. Charles River offers multiple screening methods for the detection of parasites in rodent, rabbit, and large animal colonies. Samples (e.g., feces, swabs, or tapes) collected at your facility can be submitted directly to our laboratory for testing. Once you are ready to submit samples, [visit LTM™](#) to create your order online.

[Learn More](#) →

### Diagnostic Necropsy and Histopathology Services

Services range from routine diagnostic assessment to pathology support or custom protocol design with report.

[Learn More](#) →

## Germ-Free Colony Health Screening

### Comprehensive Germ-Free Colony Health Screening

The single most important specification for germ-free mouse colonies is that they remain free of microbes. Charles River offers and recommends that both culture-dependent and culture-independent screening methods be used to assure that even fastidious bacteria that are difficult to isolate are detected. Fecal pellets collected per our recommended specifications can be submitted for all methods of germ-free monitoring described below.

For a more complete assessment, whole animals, antemortem samples, or environmental samples can also be submitted to our laboratory for standard health monitoring procedures. Our health monitoring experts are available to provide guidance on establishing a routine germ-free assessment program specific to your colony and research.

### Anaerobic and Aerobic Culture

We use state-of-the-art anaerobic chambers, not canister methods, to provide the most sensitive isolation procedures for fastidious obligate anaerobic bacteria, which may take up to 14 days to grow. Fecal pellets submitted for culture are also screened for motile bacteria by wet mount analysis, a culture independent method, upon arrival.

### 16S Ribosomal RNA PCR

This PCR screening, uses broadly reactive PCR primers to detect all bacterial phyla. This culture independent assay uses technology that prevents false-positive detection commonly caused by other PCR detection methods.

If you require a testing option that isn't listed or want to find the right one for your needs, reach out to our team at [labservices@crl.com](mailto:labservices@crl.com) so we can assist you.

[Learn More](#) →



## Serology

Our primary serology testing method is the Multiplexed Fluorometric ImmunoAssay®, (MFIA®). Additionally, we utilize other methods such as the Indirect Fluorescent Antibody (IFA) test, or Enzyme-Linked Immunosorbent Assay (ELISA), to confirm questionable or positive results, as well as to screen select rare agents. Blood or diluted serum samples collected at your facility can be submitted directly to our laboratory for testing. Once you are ready to submit samples, [visit LTM™](#) to create your order online.

For gene therapy studies in nonhuman primates (NHPs), adeno-associated viruses are used to shuttle the genes into cells. However, neutralizing antibodies (NAb) in their blood against these AAV carriers can unwittingly interfere with success of the clinical studies. RADS offers AAV NAb services for prescreening of research models serum prior to enrolling in studies. Species that can be tested include NHP, swine, dog, rabbit, rodent and more. Both screening and titer assays are offered for different AAV serotypes using serum only.

The [HemaTIP™ blood microsamplers](#) simplifies the blood collection process by placing the media on the tip of an easy-to-hold stylus. The tip only needs to touch the blood, and its super-absorptive matrix media wicks the sample in 3-6 seconds.

### Serology profiles are available for:

- Mouse
- Rat
- Hamster
- Guinea Pig
- Rabbit
- Gerbil and Miscellaneous Rodent

[Learn More →](#)

## Serology Reagents for Infectious Agent Testing of Laboratory Animals

Serology reagents for infectious agent testing for use in your in-house laboratory are available.

### Reagents are available for:

- Multiplexed Fluorometric ImmunoAssay® (MFIA®)
- Enzyme-Linked Immunosorbent Assay (ELISA)
- Indirect Fluorescent Antibody (IFA)

[Learn More →](#)



## Serology Reagents

Our technical staff will help you set up your serology testing program, train your staff, and provide continuing support with troubleshooting and results interpretation.

[Learn More →](#)



## Nonhuman Primate (NHP)

### NHP Health Surveillance Testing

Custom panels and individual agent testing are available upon request. Services available for samples only; whole animals are not accepted.

[Learn More →](#)

### Clinical Pathology for Health Evaluation

Clinical pathology assessments are useful indicators of the overall health status of animals. To support screening NHPs for study suitability or evaluating the effects of an intervention in NHPs or mice for a research study, we offer panels for hematology and clinical chemistry analyses.

- CBC w/ differential
- CBC w/ differential and reticulocyte
- Chemistry profile complete
- Lipid profile

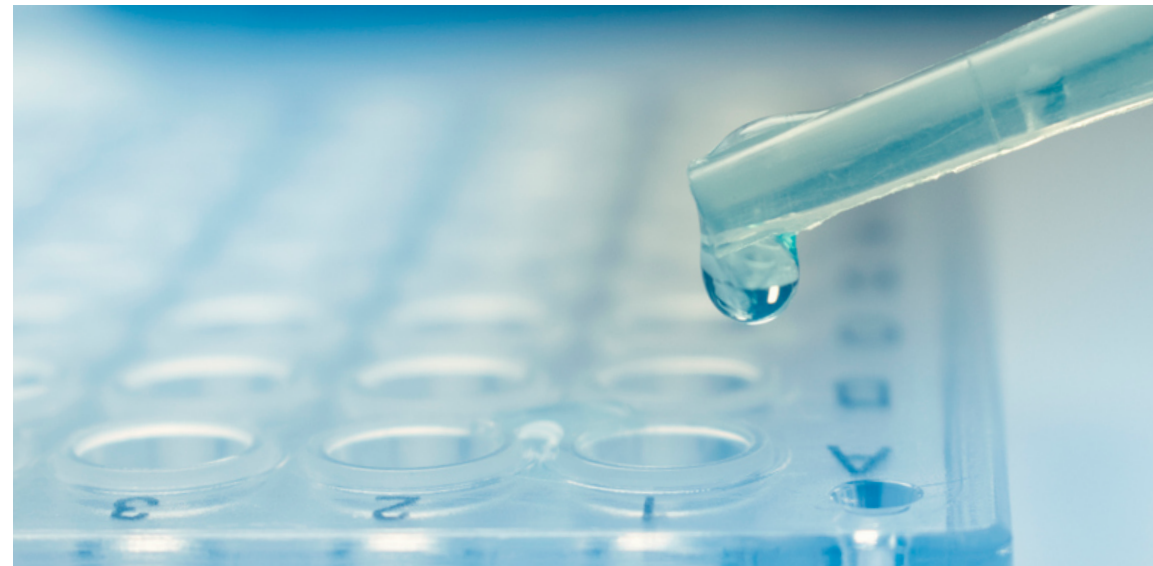
### Adeno-Associated Virus (AAV) Neutralizing Antibody Testing

Adeno-associated viruses (AAV) are commonly used as vectors to shuttle genetic material into cells for gene therapy studies in research models, most commonly NHPs. However, neutralizing antibodies (NAb) against AAVs from prior exposure to the virus can interfere with these vectors, impacting the success of clinical trials. We provide AAV NAb diagnostic testing for the prescreening of serum from research models prior to enrolling in studies.

Testing depends on the research model and can be used for other non-NHP species including rodents, rabbits, swine, dogs and more.

#### AAV Serotypes Available:

- |         |        |            |
|---------|--------|------------|
| • AAV1  | • AAV5 | • AAV9     |
| • AAV2  | • AAV6 | • AAV10    |
| • AAV3B | • AAV8 | • AAVrh.74 |



Testing of serotypes other than the ones listed are available, upon request. View and download qualification reports for available serotypes [here](#).

[Learn More →](#)

## Health Surveillance for Aquatics

- Zebrafish
- Xenopus
- Other – speak to our staff for recommendations

[Learn More →](#)

# Genetically Engineered Models and Services

Charles River takes pride in being a comprehensive provider of integrated services, including customized breeding programs, quarantine space, genetic testing, rederivation, IVF, and cryopreservation. We developed a custom-designed software solution called **ICM™ (Internet Colony Management)** for both project and vivarium management to capture data and colony information in real time. Dedicated project managers will guide your project from start to finish, and can design and execute complex breeding projects within your budget and timeline.

Learn More →



## Breeding Services

Charles River provides off-site space for holding, breeding, and developing genetically engineered mouse and rat colonies. All colonies are assigned a dedicated project manager and clients are granted access to Charles River's innovative Internet Colony Management (ICM™) system. Whether you want to simply maintain a line, produce regular animal shipments for your studies, or backcross your strain to a different genetic background, each breeding colony is scalable to your specific research needs.

[Learn More →](#)

## Quarantine Services

We provide dedicated space reserved for assessing the health profile of animals coming from outside institutions. Our PRIA®-based Rapid Quarantine program offers fast and comprehensive test results in as little as 2-3 weeks. We can also develop custom protocols to meet your animal facility requirements.

[Learn More →](#)

## Rederivation Services

Rederivation can eliminate unwanted parasites, viruses, bacteria, and other opportunistic agents from research colonies. IVF Rapid Expansion can generate large quantities of animals in a single generation. We offer a number of options based on the genetics of your strain and/or the quantity of animals available.

[Learn More →](#)

## Cryopreservation Services

Cryopreservation provides a permanent solution to archiving genetically engineered lines no longer being actively used, as well as safeguarding valuable lines in the event of a problem with the health or genetics of the line or a natural or facility disaster.

[Learn More →](#)

## Cryorecovery Services

While cryopreserving your valuable genetically engineered animals is an important part of protecting your research against unforeseen events, having the ability to recover live animals from frozen stock quickly and efficiently is equally critical to safeguarding your lines. Cryopreserving embryos or utilizing IVF technology with frozen sperm ensures you can produce cohorts of any size in as few as three months through the cryo-recovery process.

[Learn More →](#)



## Genetically Engineered Models and Services

Simplify your colony management services with no upfront fees or commitment.

Discuss Your  
Project with Us Today [→](#)



## Microinjection Services

Charles River can help you bridge the gap from *in vitro* to *in vivo* models. Our dedicated team will prepare and inject your ES cells or genetic material (DNA, CRISPR, ES recombinant clones). Choose the appropriate package described below and provide us your biological material to receive your VAF/Elite® mice.

[Learn More →](#)

## Transgenic Model Creation

Charles River has joined forces with leading genomic engineering providers to deliver a complete and integrated solution for mouse and rat model creation. Our combined expertise provides an optimum environment for creating, characterizing, preserving, and breeding your transgenic lines.

[Learn More →](#)

## Specialized Embryology Services

### Line Rescue

Charles River continually invests in new innovations and sophisticated techniques within our embryology program. In addition, we offer laser-assisted *in vitro* fertilization to aid in embryo production using IVF technology for non-optimal sperm samples when rescuing lines. Sperm analysis and morphology to assess unproductive male performance can be performed utilizing our Computer-Assisted Sperm Analysis System. (IVOS).

[Learn More →](#)

### MEA Testing

Charles River's high-throughput embryology laboratory offers non-regulated testing using both mouse embryo assay (MEA) and human sperm assay (HSA) to screen media, reagents, and disposable laboratory supplies. These bioassays are used for assessing functionality and toxicity of the client's media and materials.

[Learn More →](#)



## Webinar Series

Access our Genetically Engineered Models and Services webinar series and learn how services, including colony management, rapid quarantine, cryopreservation, and IVF, can save you time and money.

[Watch Now →](#)

# cradl

charles river accelerator  
& development lab

Slowing your preclinical research to build and staff private vivaria lab space is often not the right approach when you want to remain financially agile and maximize resources. CRADL® offers turnkey vivarium rental space for emerging and well-established biopharma companies, as well as academic institutions looking to expand vivarium space without a cost-prohibitive build.

[Tour CRADL →](#)



## Research-Ready

CRADL® combines modern, equipped vivarium space with industry-leading expertise in animal husbandry and vivarium management to ensure you have what you need to achieve your research milestones on time and on budget. Researchers gain hands on control of their studies, no longer reliant on outsourced study availability or delays. Clients can react to real-time study data and easily expand studies in our flexible vivarium rooms with on-demand technical support services. This keeps client headcount lean and funding focused on study execution.

### Humane Care and IACUC Support

Charles River's Humane Care Imperative is overseen by our Animal Welfare and Training group. Our Institutional Animal Care and Use Committee (IACUC) provides rapid review and approval of new or amended protocols. They ensure clients can initiate studies quickly while practicing under the highest standards of care and use of laboratory animals.

[Learn More →](#)

## Technical Services

On-site *in vivo* staff are available hourly or long-term to provide additional study support functions such as dosing, sampling and measurements, study preparation, and more.

[Learn More →](#)

### Equipment Rental

Core rack and caging equipment are provided. Additional standard research equipment is available for rent.

### Procurement Services

Approved vendor-sourced animals and research supply ordering.

## Flexible

From startup companies that want to retain control of their research with an expert partner to manage day-to-day vivarium functions, to mid-sized and larger institutions that have either outgrown their existing space or are looking to expand their research space without building additional infrastructure, our CRADL vivaria are the ideal solution.

CRADL has several options available depending on your study requirements. Space is available for short- and long-term durations and can be privately occupied or shared with other partners as a low-cost solution for start-up or pilot research projects.

### Shared Rooms

Clients can start with a single row of study cages in a shared holding room with shared procedure space and scale up as needed.

### Dedicated Rooms

Private animal holding and procedure rooms are available for clients looking to expand their on-site research team and study space.

### Expanded Suites

These larger rooms are equipped with connected animal holding and procedure space to provide clients with a complete, private solution.

## Comprehensive

CRADL not only provides a turnkey vivarium rental solution, it also grants you access to *in vivo* support services within Charles River, allowing your research to advance efficiently. Whether you need to create a unique transgenic model, are looking for histopathology support, or need to design a program that ensures the health and genetic integrity of your research animal colonies is upheld, these services can be added as part of your total Charles River package offering.

### Customized *In Vivo* Support Services Include:

- Transgenic model creation
- Surgery and pre-conditioning services
- Rapid animal colony development
- Histopathology and tissue collection
- Cryopreservation services
- Cell line and biologics screening
- Quarantine services
- Animal genotyping services

[Learn More →](#)



# Glossary of Terms

---



## Glossary of Terms

Agent	Abbreviation	Family/Order	Subfam/Genus	Host Species*
Adenovirus	MAV, RAD	Adenoviridae	Mastadenovirus	M, R
Aleutian disease virus	ADV	Parvoviridae	Amdovirus	F
Cilia-associated respiratory bacillus	CARB	Unclassified	Unclassified	M, R, Rb
<i>Clostridium piliforme</i>	CPIL	Clostridaceae	Clostridium	M, R, Rb, F
Distemper virus	CDV	Paramyxoviridae	Morbillivirus	F
Ectromelia virus (Mousepox)	ECTRO	Poxviridae	Orthopoxvirus	M
Eimeria	EIM	Eimeriidae	Eimeria	M, Rb
<i>Encephalitozoon cuniculi</i>	ECUN	Pleistophoridae	Encephalitozoon	M, R, GP, H, Rb
Encephalomyocarditis virus	EMCV	Picornaviridae	Cardiovirus	M, R
Guinea pig adenovirus	GAV	Adenoviridae	Mastadenovirus	GP
Guinea pig cytomegalovirus	GpCMV	Herpesviridae	Betaherpesvirus	GP
Hantaan	HTNV (HANT)	Bunyaviridae	Hantavirus	M, R
Infectious pancreatic necrosis virus	IPNV	Birnaviridae	Aquabirnavirus	Z
Infectious spleen and kidney necrosis virus	ISKNV	Iridoviridae	Megalocytivirus	Z
Influenza A virus	INFA	Orthomyxoviridae	Influenzavirus A	F
Kilham rat virus	KRV	Parvoviridae	Protoparvovirus	R
Lactate dehydrogenase elevating virus	LDV/LDH	Arteriviridae	Arterivirus	M
Ljungan virus	LV	Picornaviridae	Parechovirus	R
Lymphocytic choriomeningitis virus	LCMV	Arenaviridae	Arenavirus	M, R, GP, H
Minute virus of mice	MVM	Parvoviridae	Protoparvovirus	M
Murine chapparovirus	MuCPV, MKPV, RoChPV-1	Parvoviridae	Chapparovirus	M
Mouse cytomegalovirus	MCMV	Herpesviridae	Betaherpesvirus	M
Mouse hepatitis virus	MHV	Coronaviridae	Betacoronavirus	M
Mouse parvovirus	MPV-1/-2/-5	Parvoviridae	Protoparvovirus	M
Mouse pneumonitis virus	K	Polyomaviridae	Polyomavirus	M
Mouse thymic virus	MTLV	Herpesviridae	Roseolovirus	M

\* Species: M = mouse, R = rat, GP = guinea pig, H = hamster, Rb = rabbit, F = ferret, Z = zebrafish

# Glossary of Terms

Agent	Abbreviation	Family/Order	Subfam/Genus	Host Species*
Murine norovirus	MNV	Caliciviridae	Norovirus	M
Murine rotavirus	EDIM/ROTA-A	Reoviridae	Rotavirus	M
Mycoplasma arthritidis	MARTH	Mycoplasmataceae	Mycoplasma	M, R
Mycoplasma pulmonis	MPUL	Mycoplasmataceae	Mycoplasma	M, R
Myxomatosis virus	MYXO	Poxviridae	Leporipoxirus	Rb
Parainfluenza virus (type 1)	PIV-1	Paramyxoviridae	Respirovirus	Rb
Parainfluenza virus (type 2)	PIV-2	Paramyxoviridae	Rubulavirus	Rb
Parainfluenza virus (type 3)	PIV-3	Paramyxoviridae	Respirovirus	GP
Parainfluenza virus (type 5)	PIV-5	Paramyxoviridae	Rubulavirus	GP, H
<i>Pneumocystis carinii</i>	PCAR	Pneumocystidaceae	Pneumocystis	R
Pneumonia virus of mice	PVM	Paramyxoviridae	Pneumovirus	M, R, GP, H
Polyoma virus	POLY	Polyomaviridae	Polyomavirus	M
Prospect Hill virus	PHV	Bunyaviridae	Hantavirus	M
Rabbit adenovirus	RbAV	Adenoviridae	Mastadenovirus	Rb
Rabbit adenovirus	RbAV	Adenoviridae	Mastadenovirus	Rb
Rabbit hemorrhagic disease virus	RHDV	Caliciviridae	Lagovirus	Rb
Rabbit picobirnavirus	RPBV	Picobirnaviridae	Picobirnavirus	Rb
Rabbit rotavirus	ROTA	Reoviridae	Rotavirus	Rb
Rat coronavirus/sialodacryoadentitis virus	RCV, SDAV	Coronaviridae	Betacoronavirus	R
Rat cytomegalovirus	RCMV	Herpesviridae	Betaherpesvirus	R
Rat minute virus	RMV	Parvoviridae	Protoparvovirus	R
Rat parvovirus	RPV	Parvoviridae	Protoparvovirus	R
Rat polyomavirus	RatPyV2/RPyV2	Polyomaviridae	Unclassified	R
Rat rotavirus (infectious diarrhea of infant rats)	IDIR/ROTA-B	Reoviridae	Rotavirus	R
Rat theilovirus (Theiler's-like virus of rats)	RTV	Picornaviridae	Theilovirus	R
Reovirus	REO	Reoviridae	Orthoreovirus	M, R, GP, H

\* Species: M = mouse, R = rat, GP = guinea pig, H = hamster, Rb = rabbit, F = ferret, Z = zebrafish

## Glossary of Terms

Agent	Abbreviation	Family/Order	Subfam/Genus	Host Species*
Rodent Protoparvovirus NS-1	NS-1	Parvoviridae	Protoparvovirus	M, R
Sendai virus	SEND	Paramyxoviridae	Respirovirus	M, R, GP, H
Seoul virus	SEO	Bunyaviridae	Hantavirus	M, R
Theiler's murine encephalomyelitis virus	TMEV (GDVII)	Picornaviridae	Cardiovirus	M, R
Toolan's H-1 virus	H-1	Parvoviridae	Protoparvovirus	R
Toxoplasma gondii	TOXO	Sarcocystidae	Toxoplasma	Rb
Treponema paraluis-cuniculi	TREP	Spirochaetales	Treponema	Rb
Epstein-Barr virus	EBV	Herpesviridae	Lymphocryptovirus	Simian
Hepatitis A	HEP-A	Picornaviridae	Hepatovirus	Simian
Herpes B virus	HBV	Herpesviridae	Alphaherpesvirus	Simian
Herpes virus papio-2	HVP-2	Herpesviridae	Alphaherpesvirus	Simian
Lymphocryptovirus	LCV	Herpesviridae	Lymphocryptovirus	Simian
Macaque (Rhesus) rhadinovirus	MRV	Herpesviridae	Rhadinovirus	Simian
Malaria (Plasmodium)	MAL	Plasmodiidae	Plasmodium	Simian
Measles virus	MV	Paramyxoviridae	Morbillivirus	Simian
Parainfluenza virus (type 5)	PIV-5 (SV-5)	Paramyxoviridae	Rubulavirus	Simian
Simian agent 8	SA-8	Herpesviridae	Simplexvirus	Simian
Simian cytomegalovirus	SCMV/CMV	Herpesviridae	Cytomegalovirus	Simian
Simian foamy virus	SFV	Retroviridae	Spumavirus	Simian
Simian immunodeficiency virus	SIV	Retroviridae	Lentivirus	Simian
Simian rotavirus	SA-11	Reoviridae	Rotavirus	Simian
Simian T-lymphotropic virus	STLV	Retroviridae	Deltaretrovirus	Simian
Simian type D retrovirus	SRV	Retroviridae	Betaretrovirus	Simian
Simian varicella virus	SVV	Herpesviridae	Varicellovirus	Simian
Simian virus 40	SV-40	Polyomaviridae	Polyomavirus	Simian
Trypanosoma cruzi (Chagas Disease)	T. cruzi/CHA	Trypanosomatidae	Trypanosoma	Simian

\* Species: M = mouse, R = rat, GP = guinea pig, H = hamster, Rb = rabbit, F = ferret, Z = zebrafish